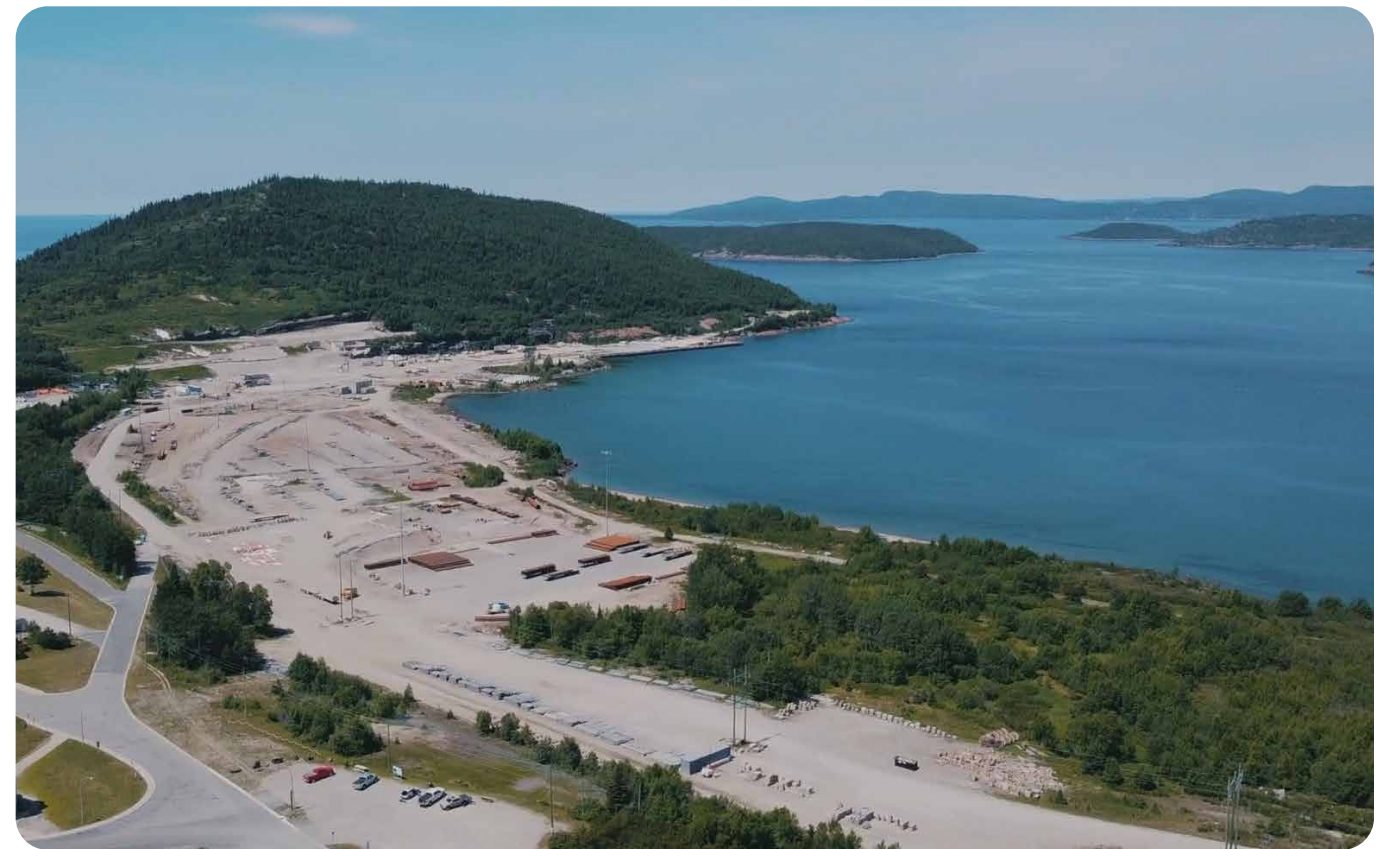
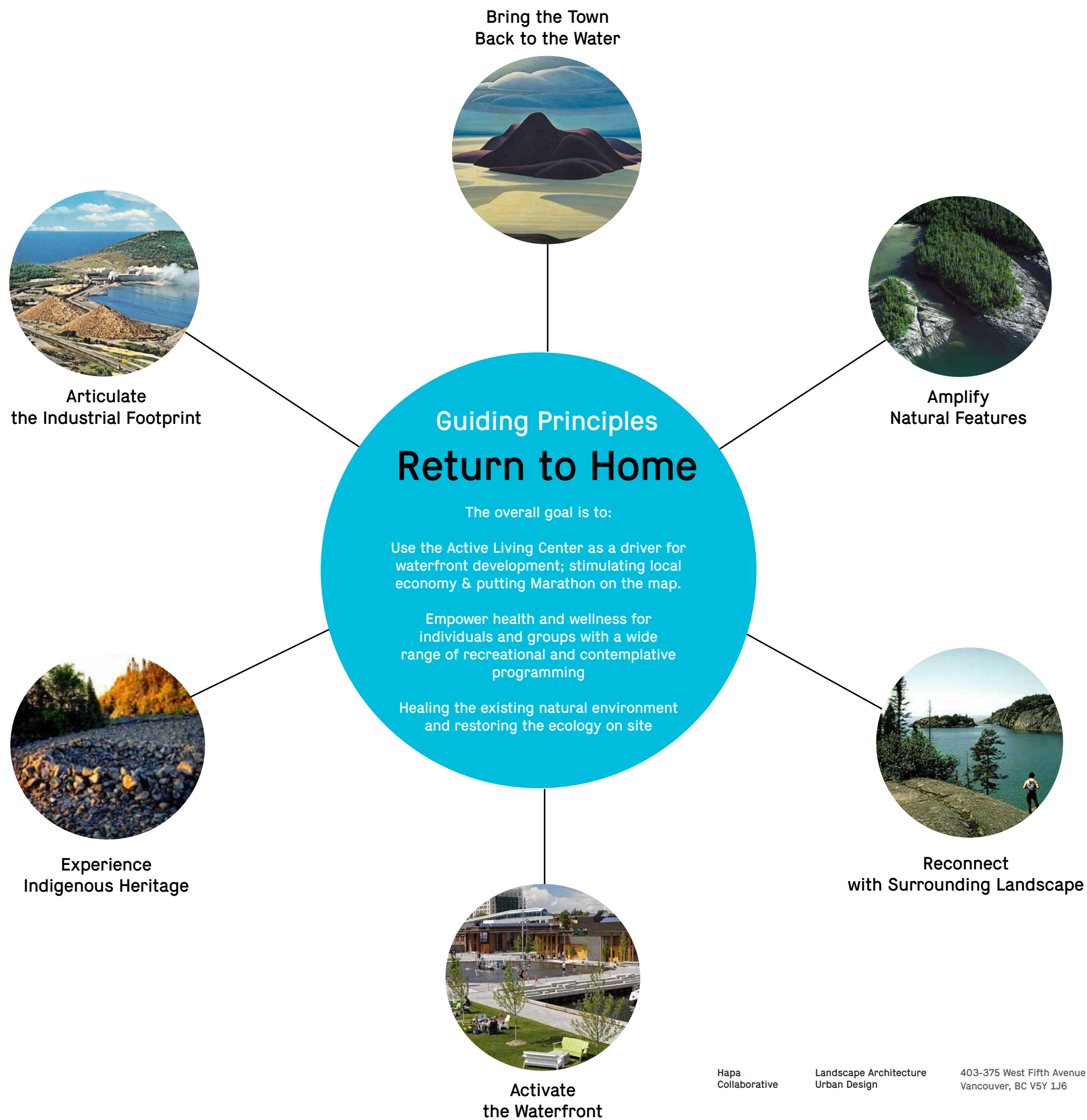


ACTIVE LIVING CENTRE

MARATHON, ON

Nov 03, 2022





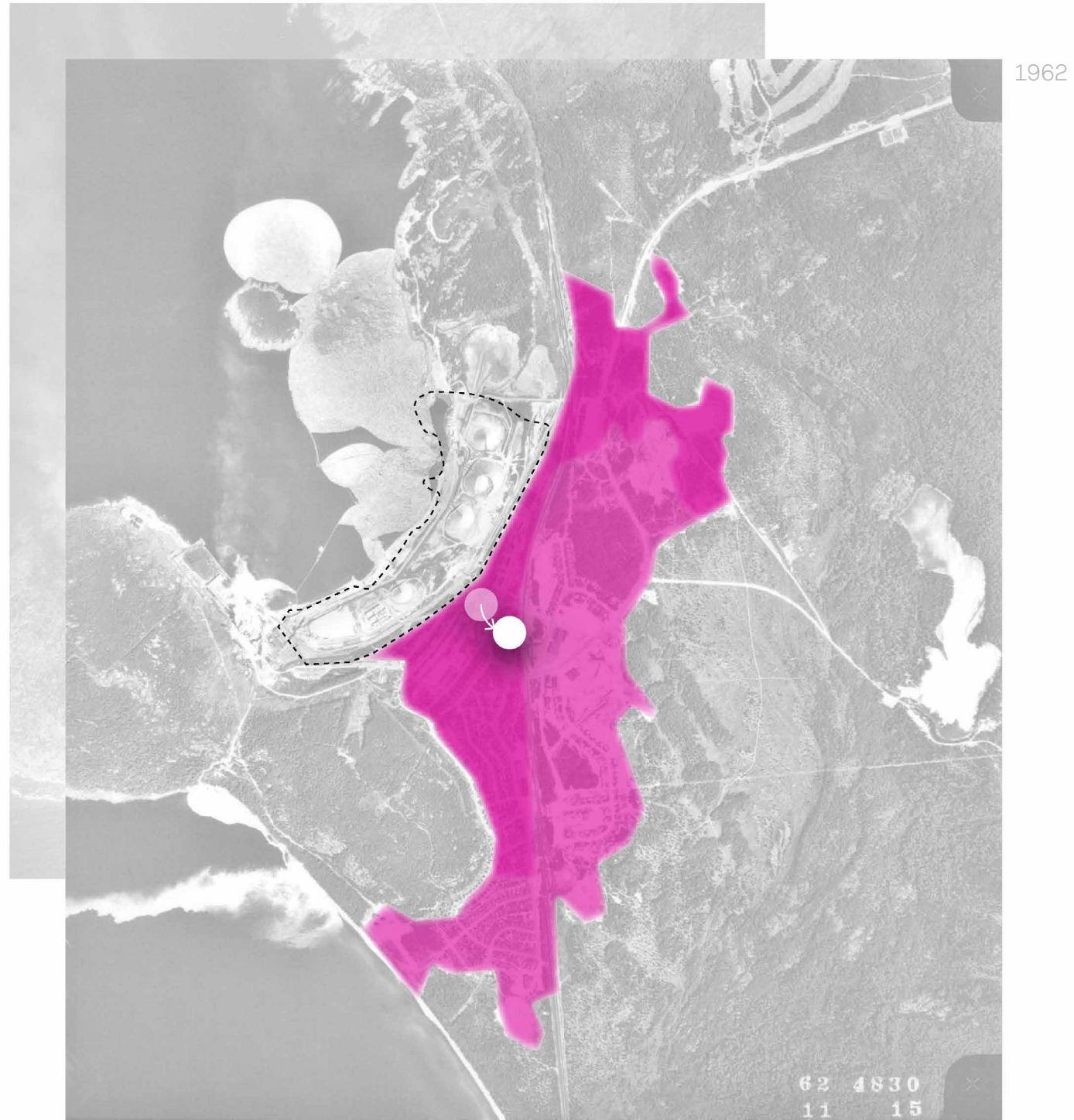
Bring the Town Back to the Water

As time has progressed, the town center has slowly grown away from the water. This project will aim to re-establish the waterfront as the hub for activity for the town. The Active Living center is the driving force in bringing the town center back to the water.

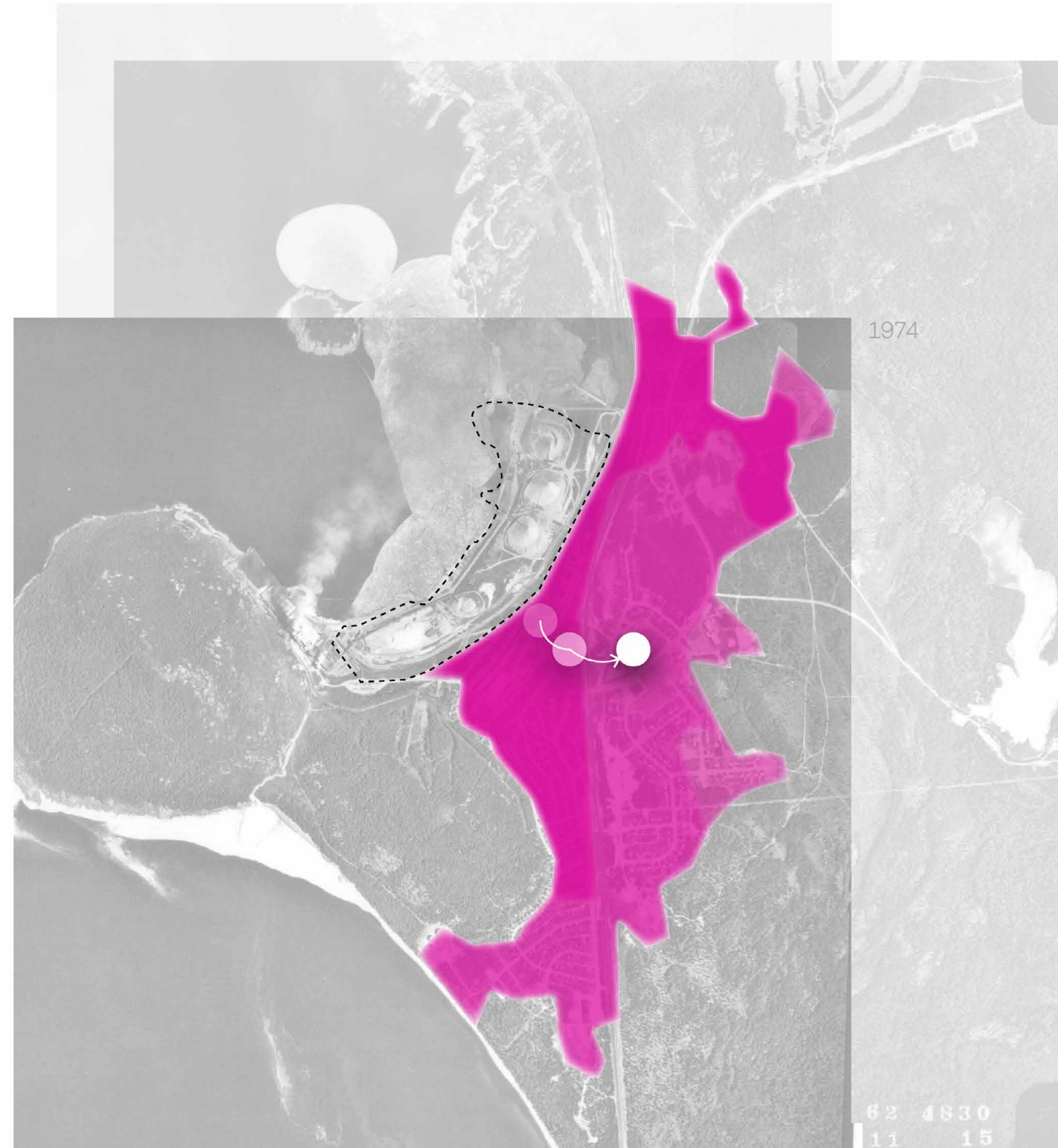


1947

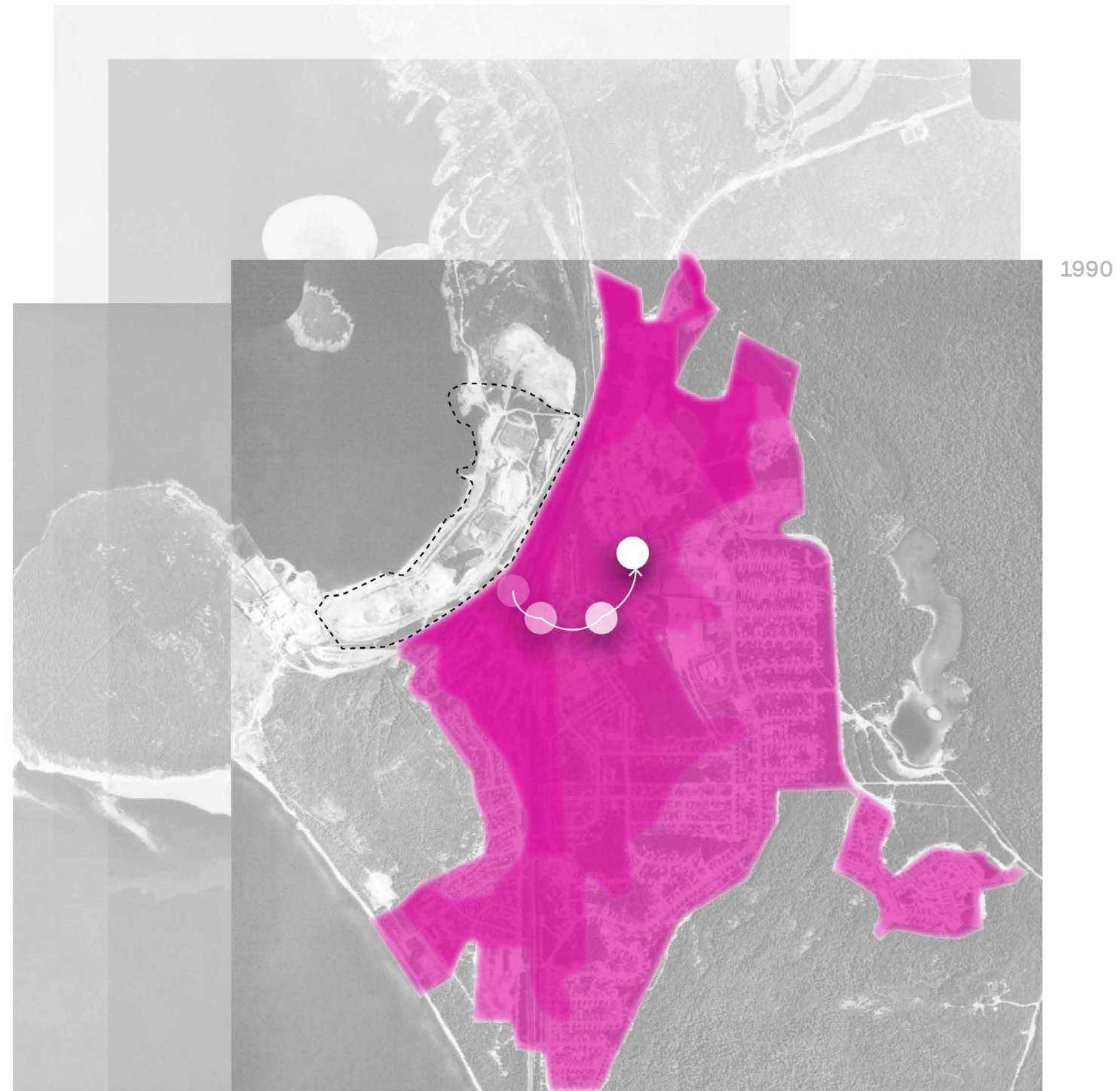
Bring the Town Back to the Water



Bring the Town Back to the Water



Bring the Town Back to the Water

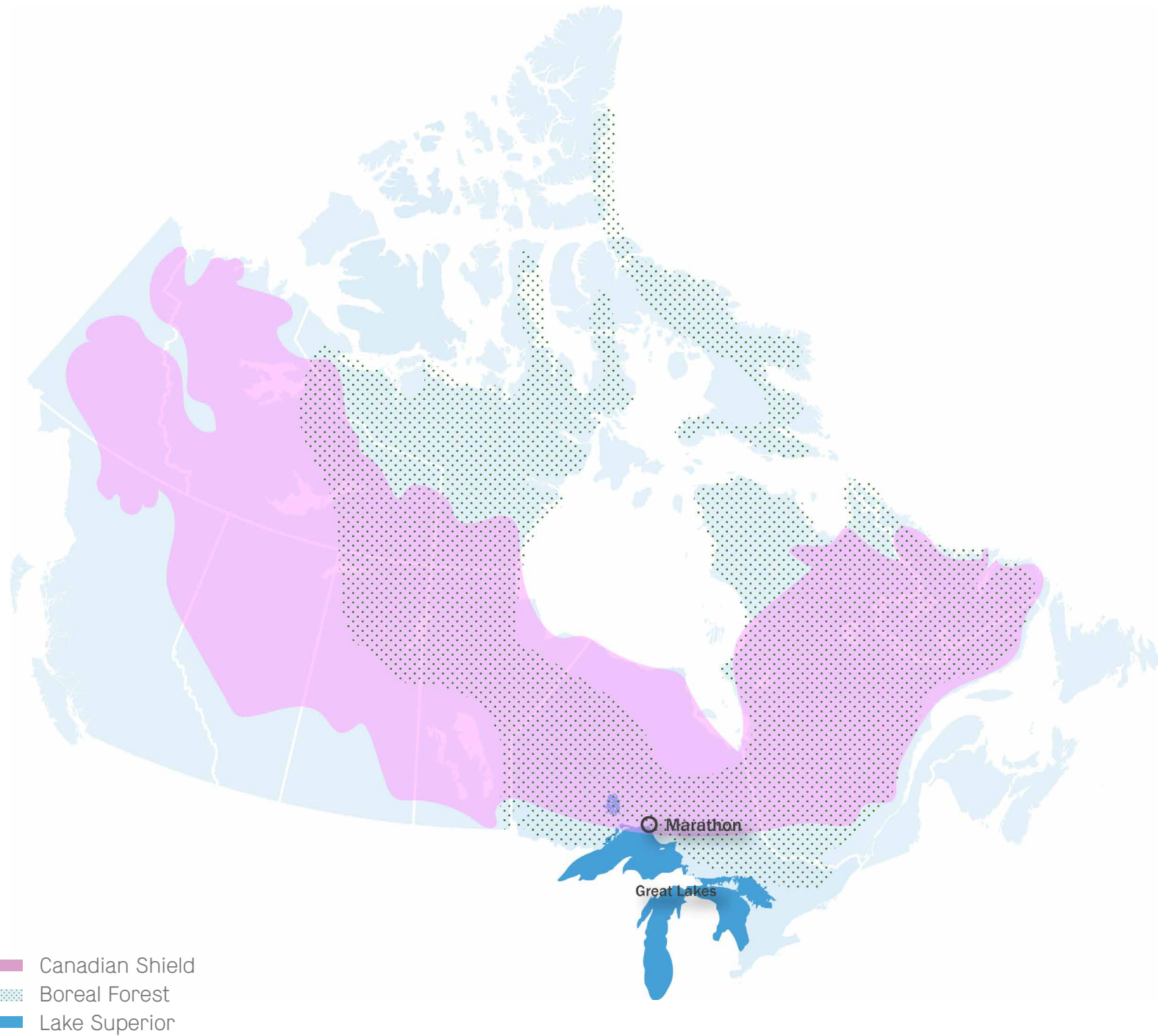


Bring the Town Back to the Water

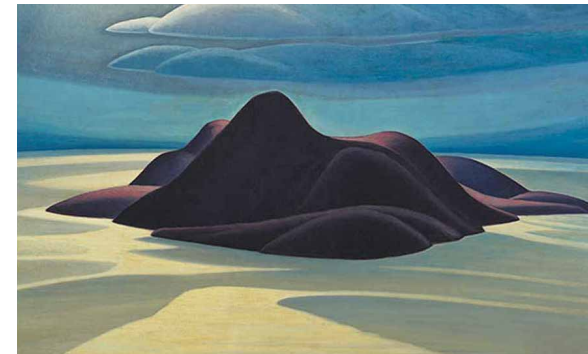
Proposed location
for the Marathon
Living Center



Amplify Natural Features



This site is uniquely located at the intersection of the Boreal Forest, the Canadian Shield, and the Great Lakes. This project aims to highlight these three iconic typologies.



The landscape painters were the first landscape designers, Lawren Harris, Pic Island



Rocks, vegetation and lake, Marathon ON

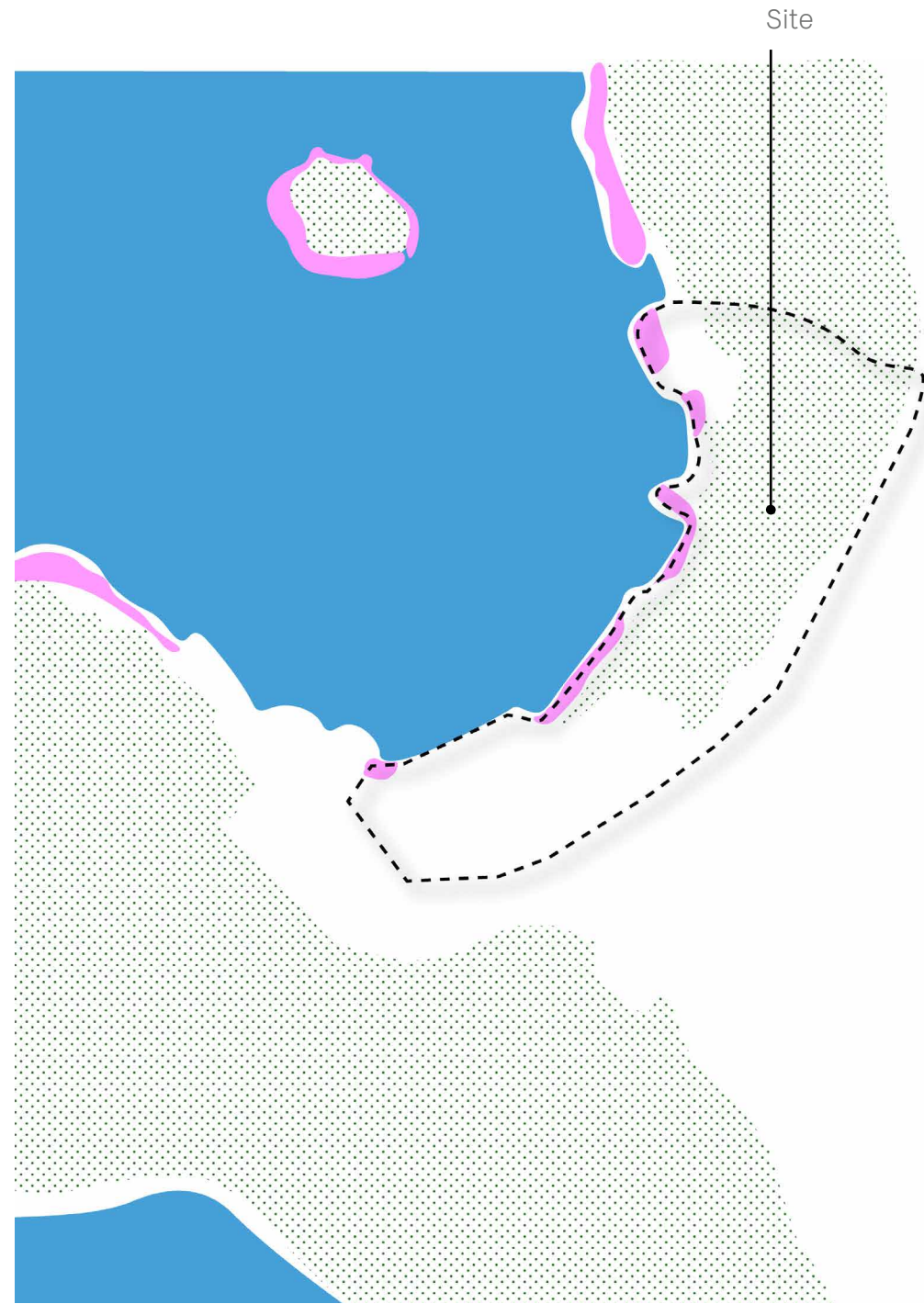


Boreal Forest, Canadian Shield and the great lakes comes together in the landscape



Pebble Beach, Lake Superior

Amplify Natural Features



- Canadian Shield
- Boreal Forest
- Lake Superior

Boreal Forest

Great Lakes

Canadian Shield



Reconnect with Surrounding Landscape

Regional Context



Site is located at the intersection of two trails. The Group of Seven and the Coastal Lagoon Trail. Reintegrate the site with the surrounding town, water and landscape by enhancing existing connections and providing new ones through placemaking and way-finding.



Group of Seven Lake Superior Trail



Pic River



Pukaskwa National Park

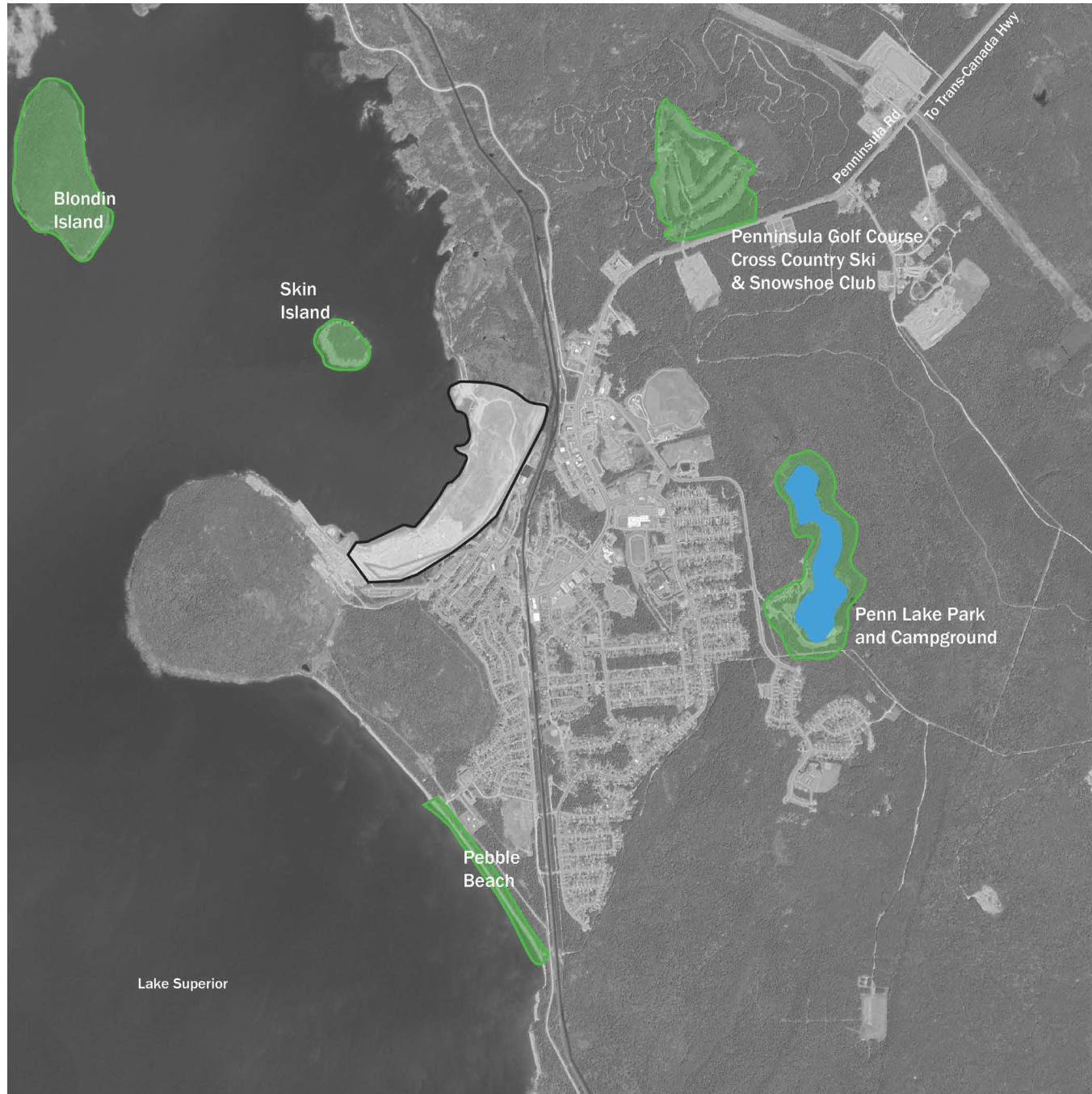


Canadian Pacific Railway

- Rivers
- Group of Seven Lake Superior Trail

Reconnect with Surrounding Landscape

Municipal Context



Pebble Beach



Penn Lake Park



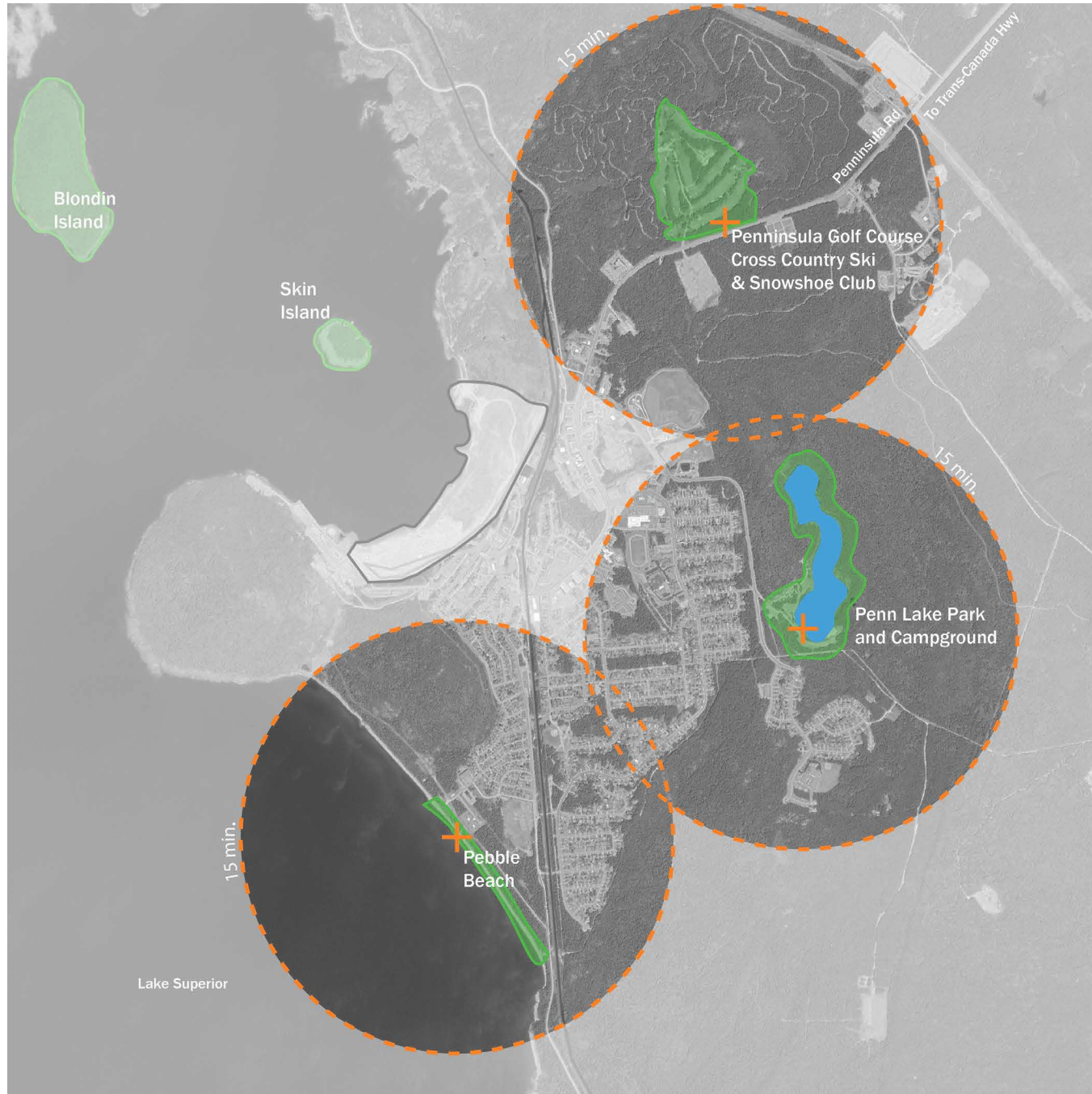
Peninsula Golf Course



Marathon Cross Country Ski and Snowshoe Club

Reconnect with Surrounding Landscape

Municipal Context



Pebble Beach



Penn Lake Park



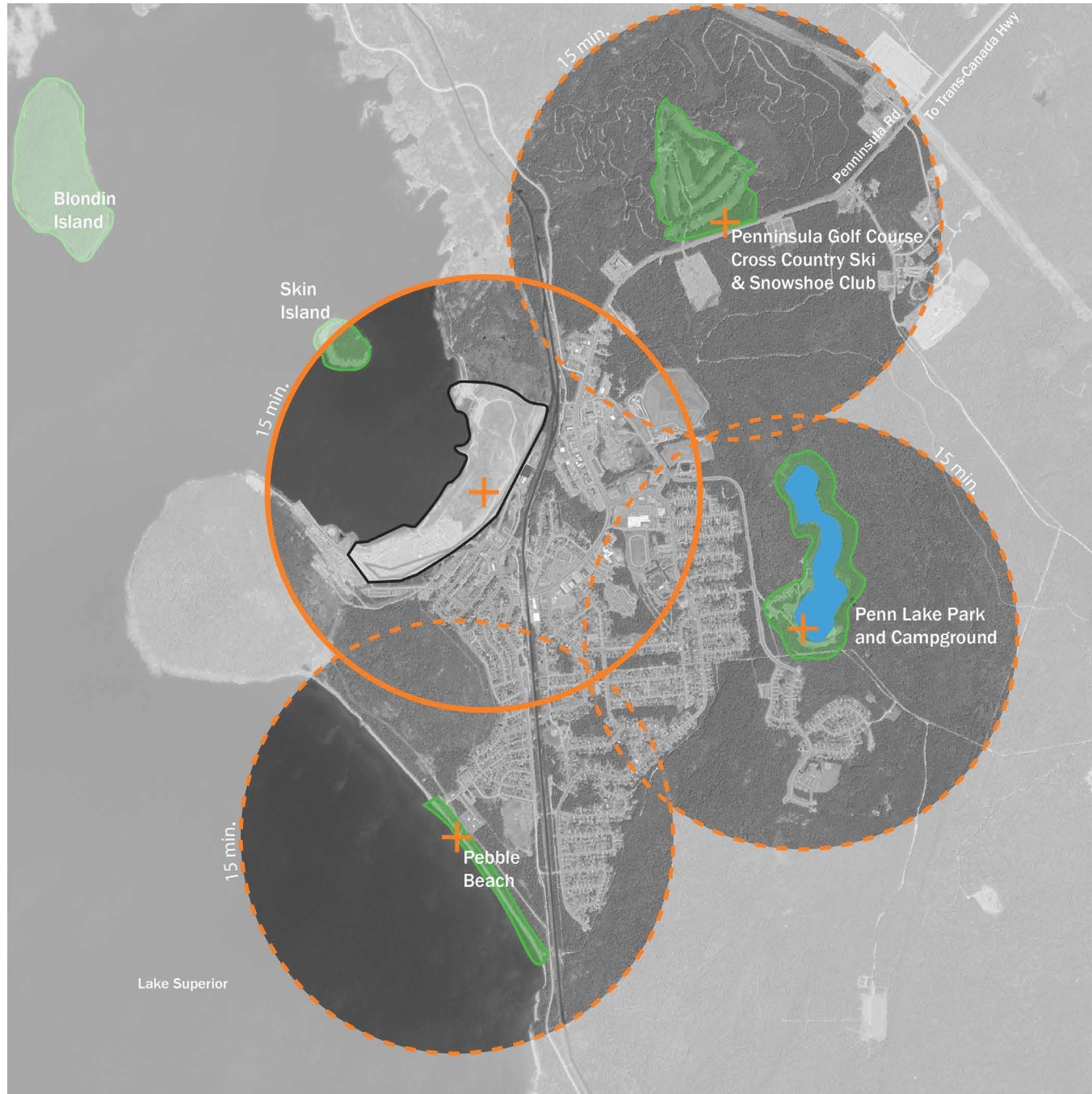
Peninsula Golf Course



Marathon Cross Country Ski and Snowshoe Club

Reconnect with Surrounding Landscape

Municipal Context



Pebble Beach



Penn Lake Park



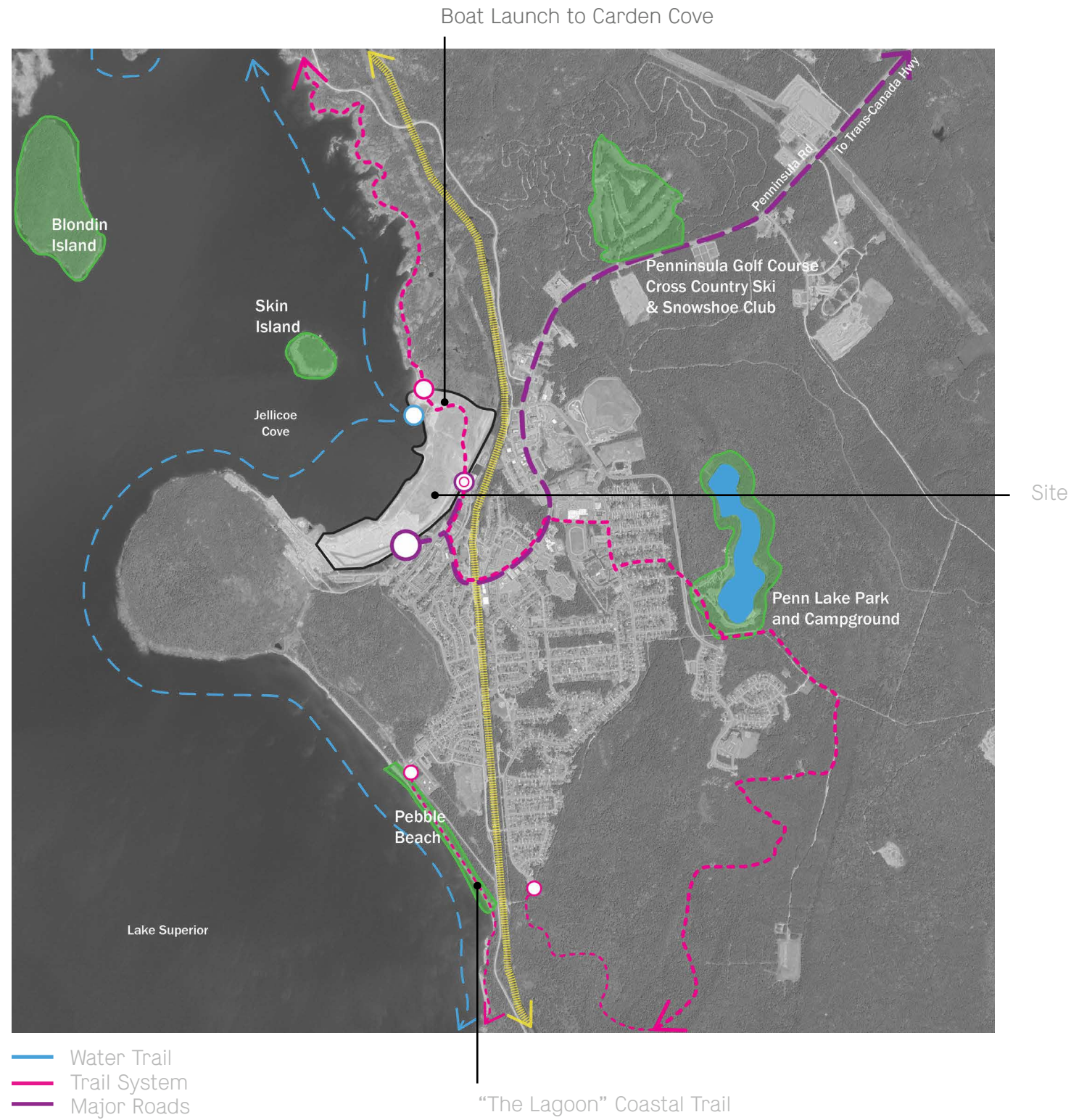
Peninsula Golf Course



Marathon Cross Country Ski and Snowshoe Club

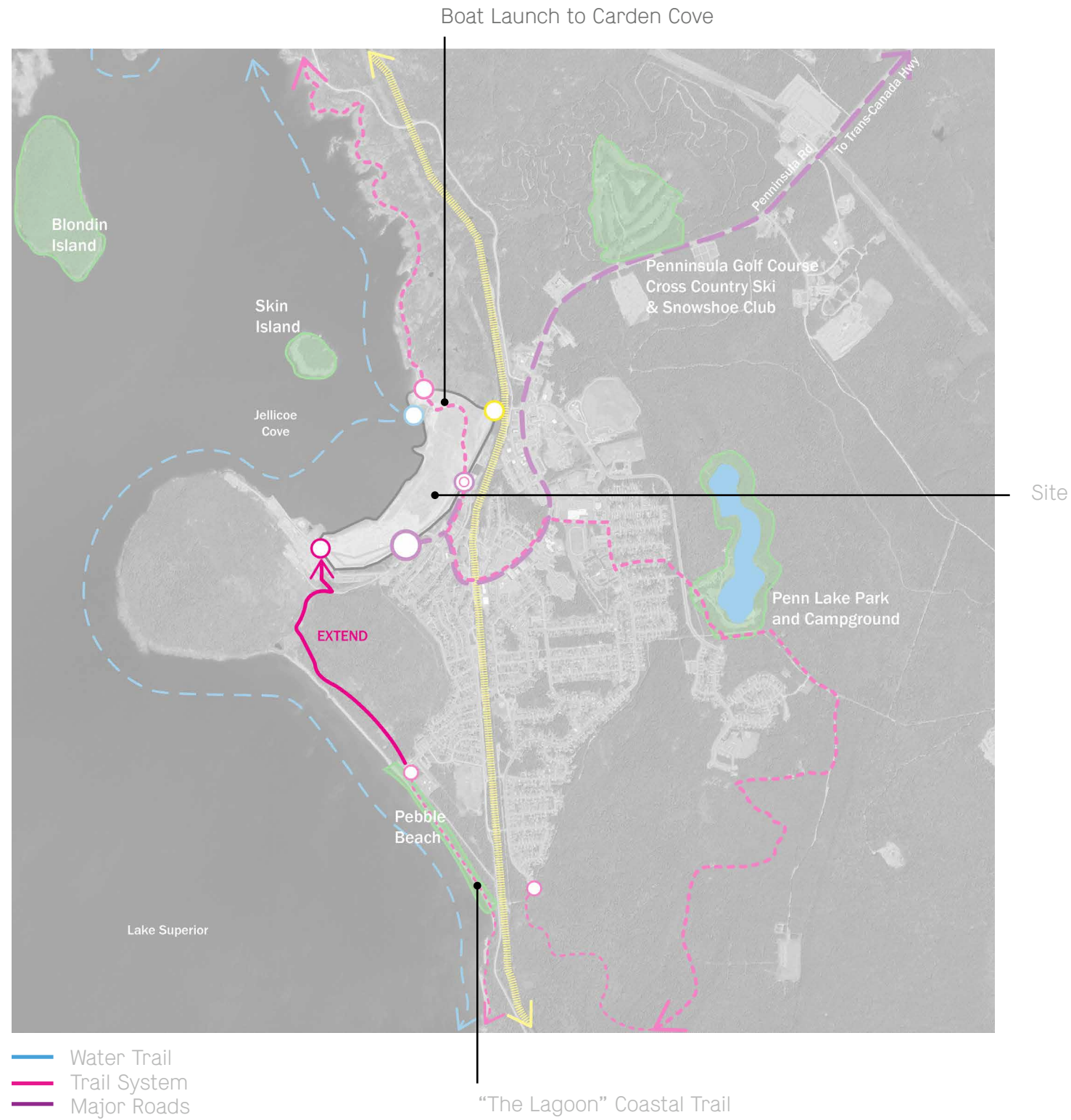
Reconnect with Surrounding Landscape

Municipal Context



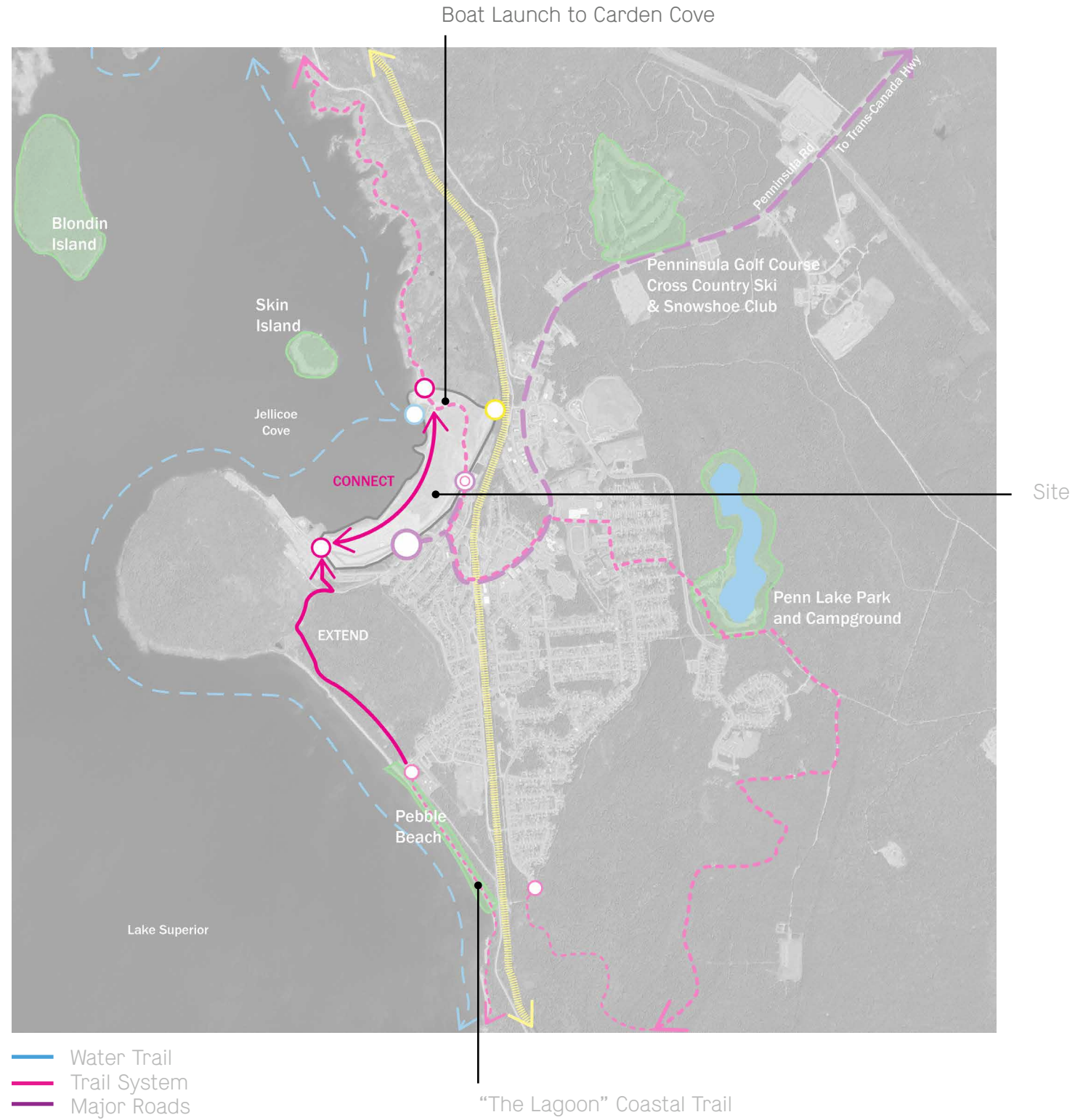
Reconnect with Surrounding Landscape

Municipal Context



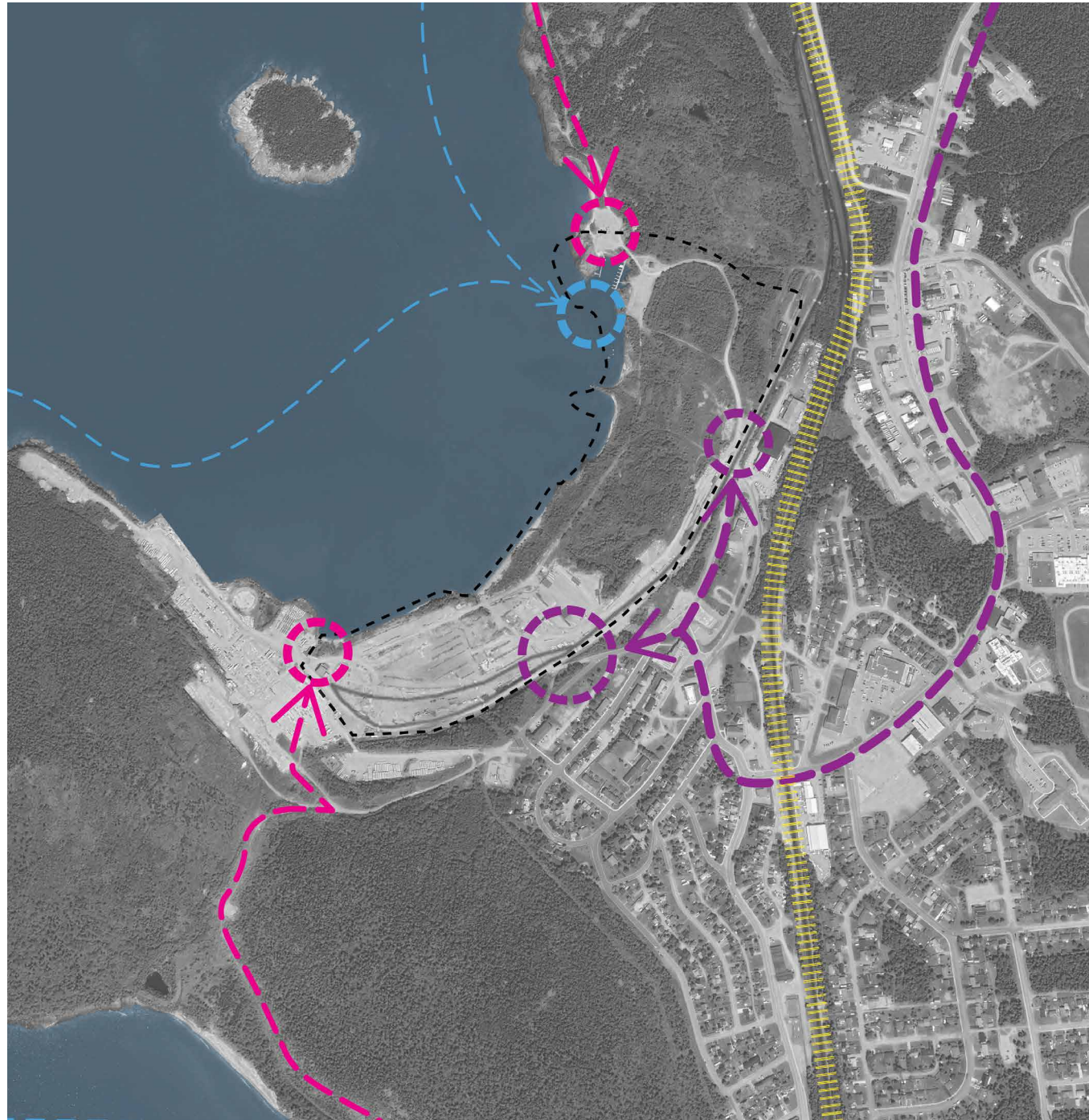
Reconnect with Surrounding Landscape

Municipal Context



Reconnect with Surrounding Landscape

Site Specific - Connectivity



Reconnect with Surrounding Landscape

Site Specific - Connectivity



Reconnect with Surrounding Landscape

Site Specific - Connectivity



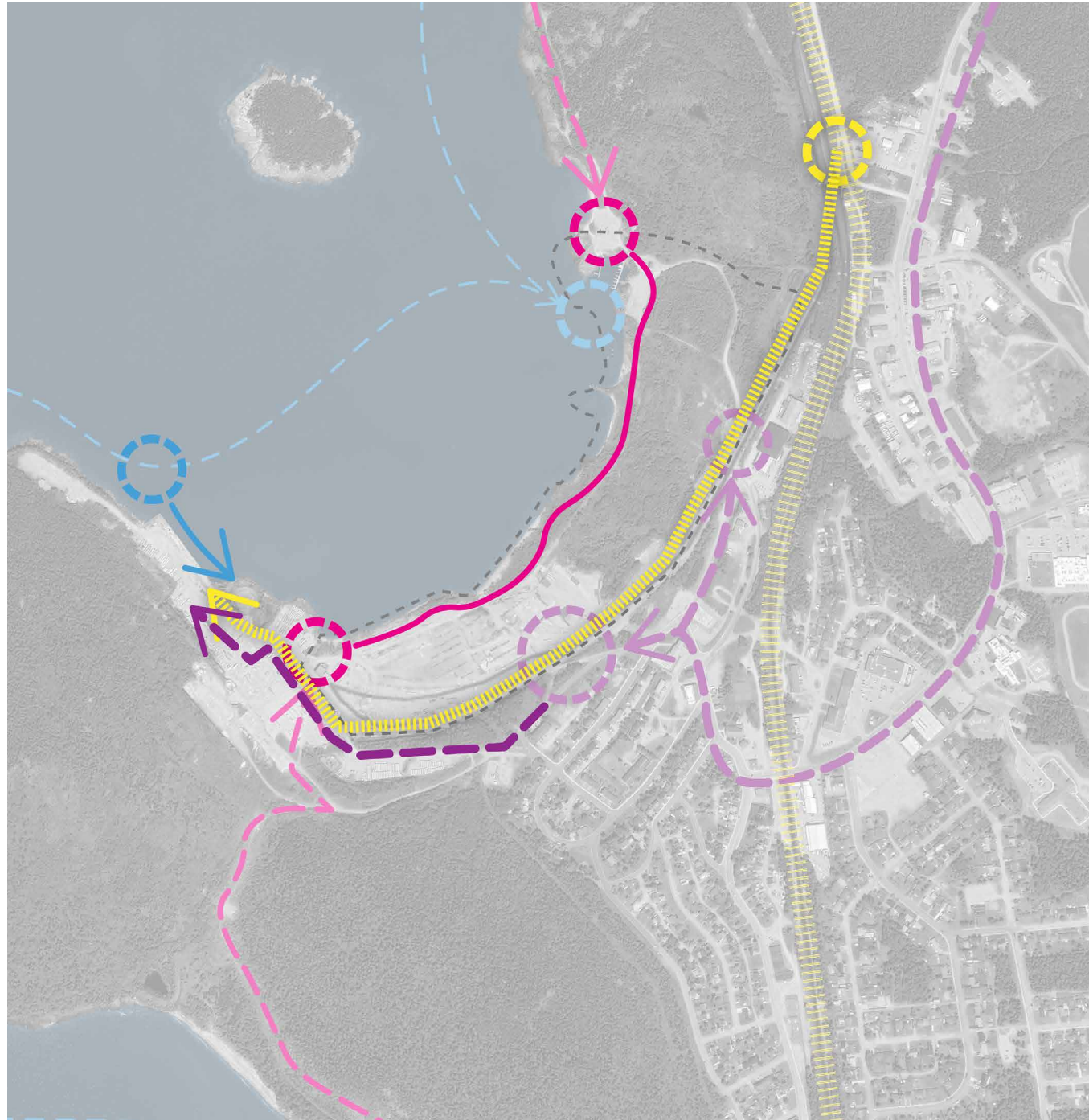
Reconnect with Surrounding Landscape

Site Specific - Connectivity



Reconnect with Surrounding Landscape

Site Specific - Connectivity



Reconnect with Surrounding Landscape

Site Specific - Green Connectivity



Reconnect with Surrounding Landscape

Site Specific - Green Connectivity



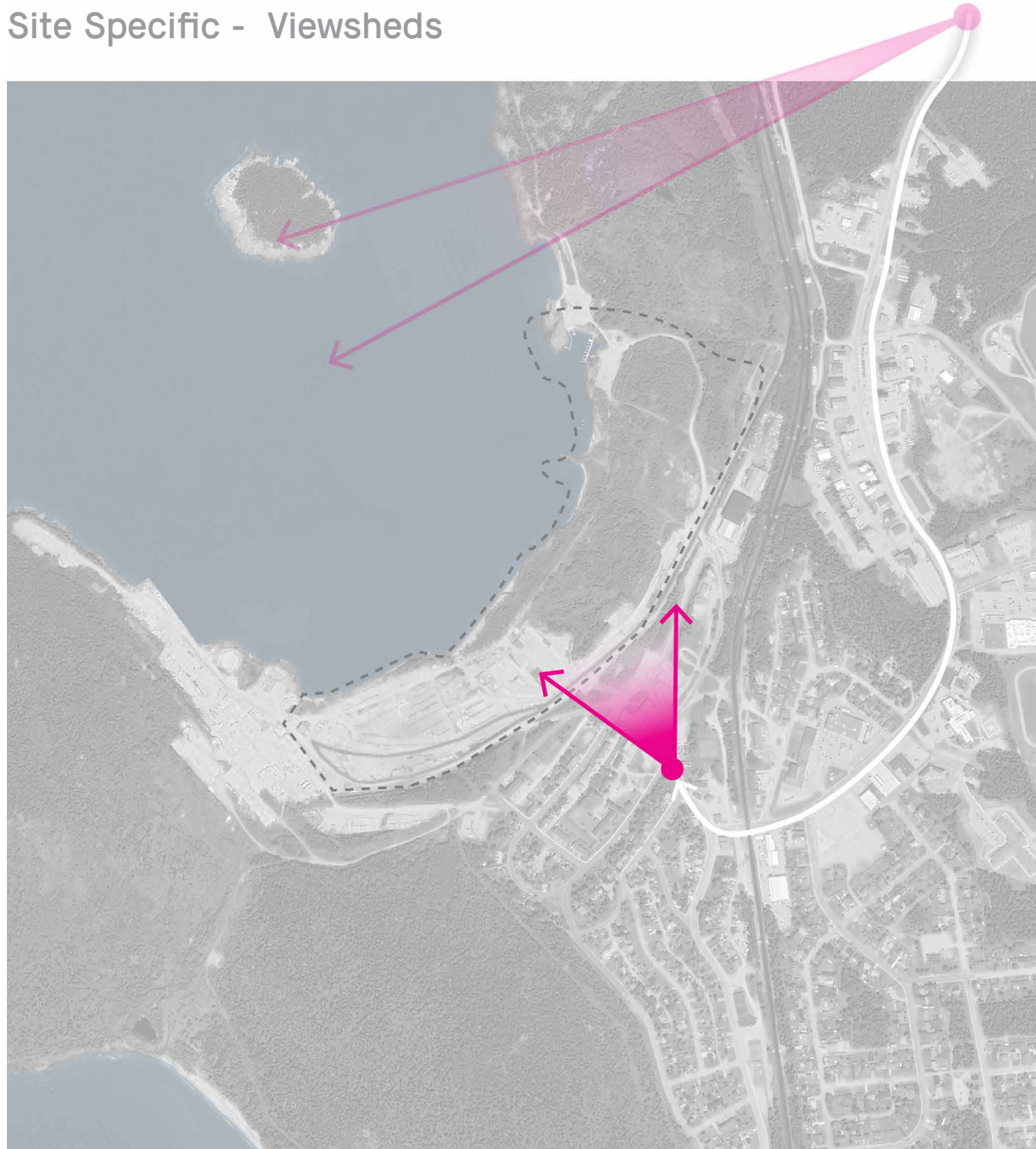
Reconnect with Surrounding Landscape

Site Specific - Viewsheds



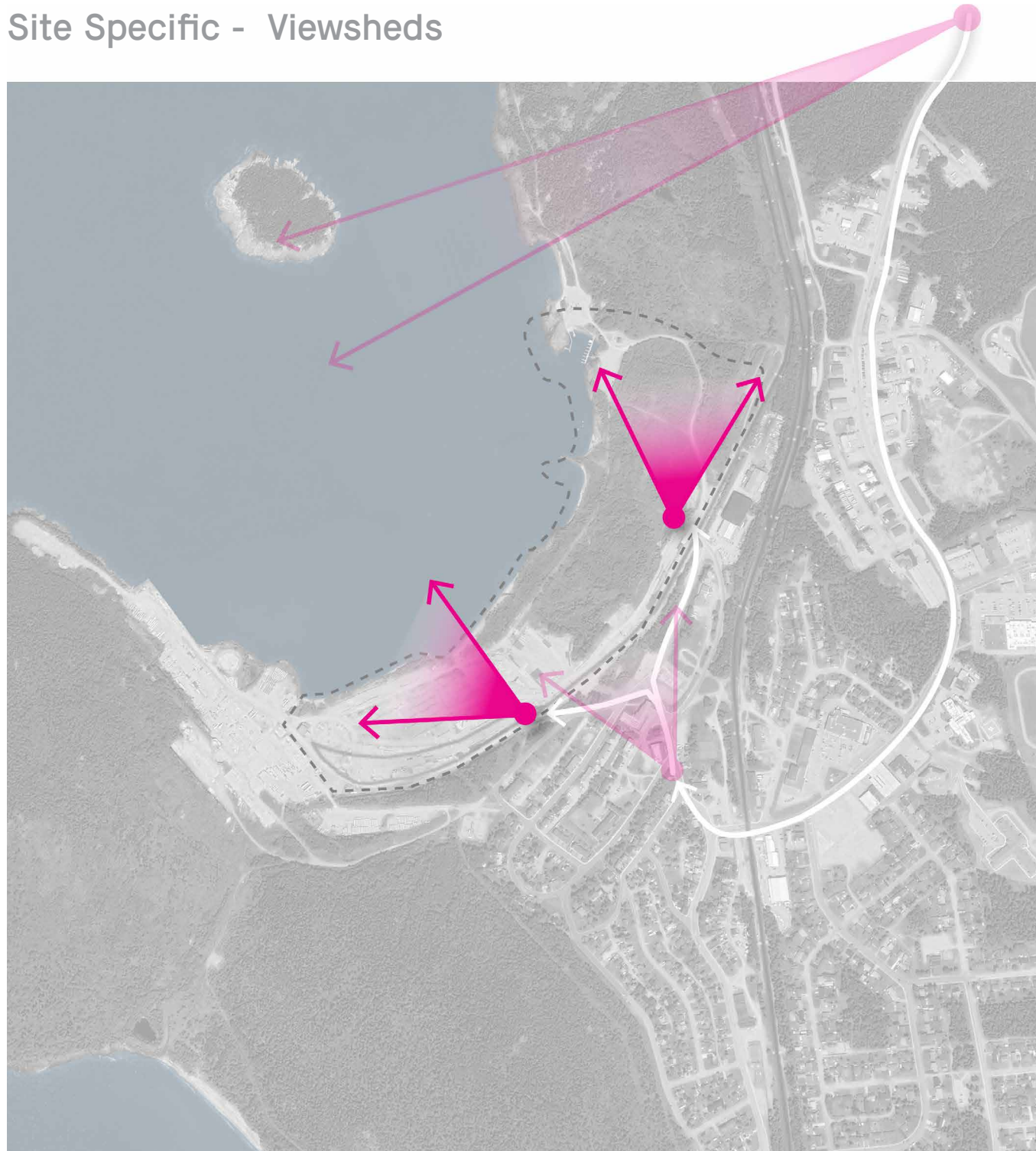
Reconnect with Surrounding Landscape

Site Specific - Viewsheds



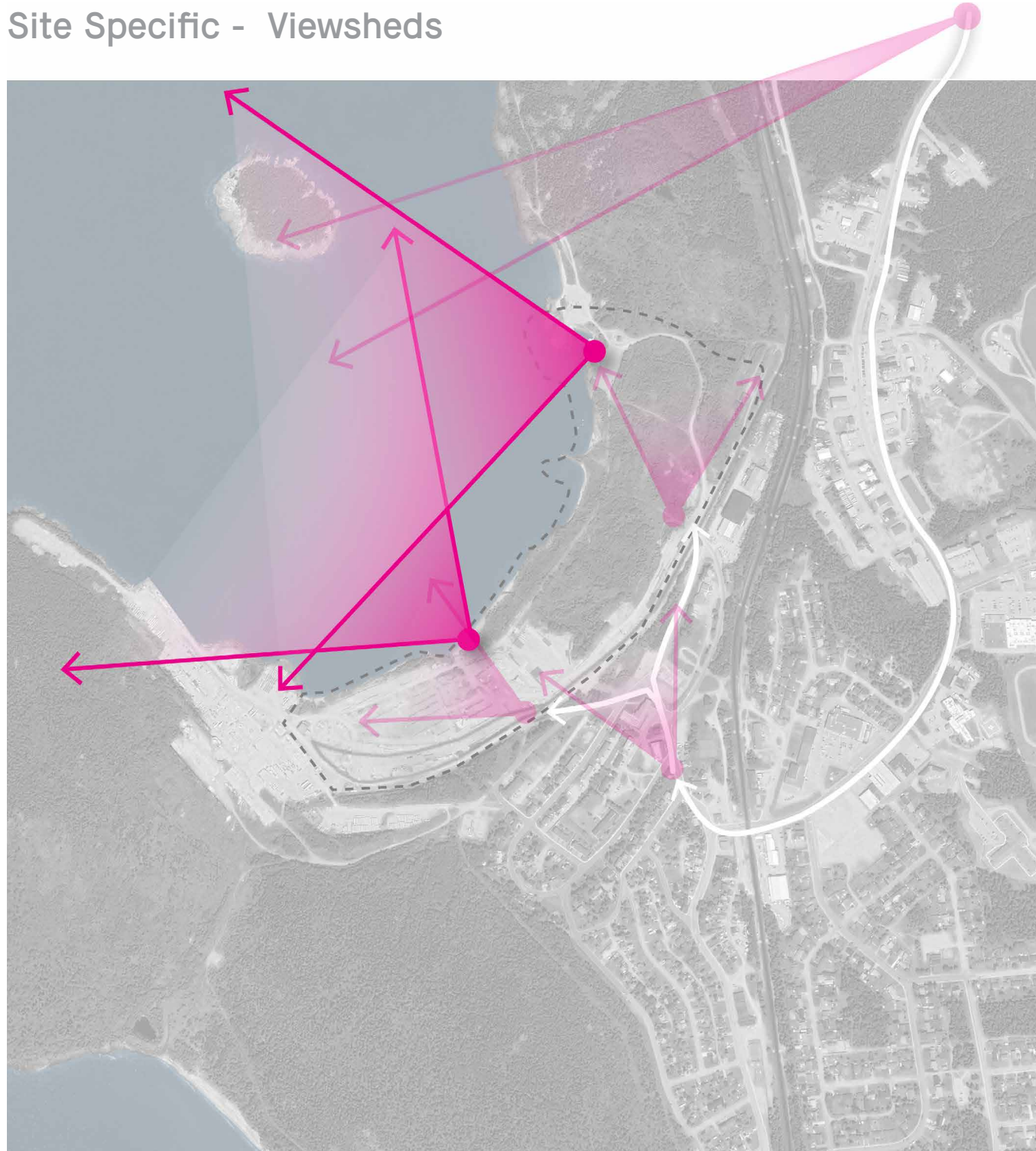
Reconnect with Surrounding Landscape

Site Specific - Viewsheds



Reconnect with Surrounding Landscape

Site Specific - Viewsheds





Thunder Bay Waterfront

Transform the waterfront to a destination by providing a wide range of programming that draws a diverse range of users and encourages 24/7 use of the space accessible to everybody.



Canal Park, Duluth Minnesota



Kawaki Waterfront Park, Richmond BC



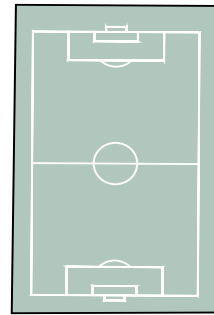
Foot of Lonsdale, North Vancouver



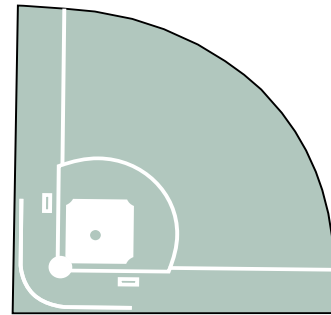
Silent spaces, Thunder Bay, Spirit Garden

Formal Program

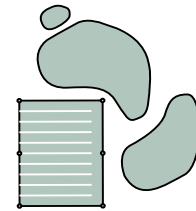
- Running Track
- Baseball Field
- Soccer Field
- Hockey Court
- Basket Court
- Tennis
- Pickleball
- Golf Practice Range and Putting Green



Soccer Field
120 x 75m



Baseball Field
120 x 120m



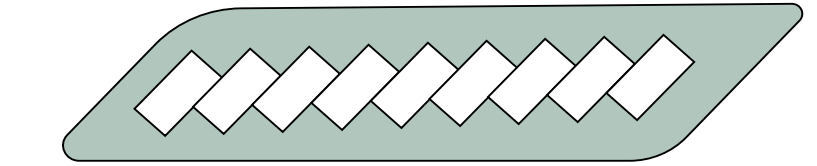
Golf Range



Tennis



Multi-court
Basketball



RV Camping



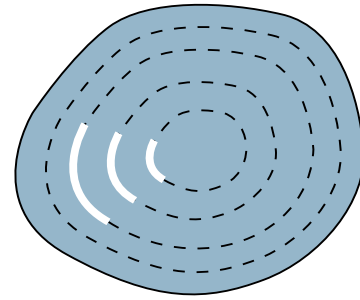
Pickleball



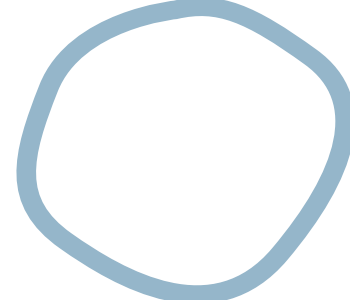
Running Track
100m

Informal Program

- Natural Playground
- Outdoor Fitness
- Stairs to the Lake
- Community Gardens
- Boreal Forest Garden
- Sliding Hill
- Campsites
- Ice rink
- Sunset Amphitheater
- Dog park
- Picnic Area
- Boat ramp for Kayaking, Canoe and Sailing



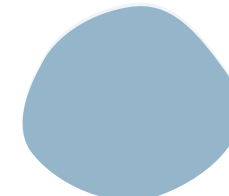
Hill Slide &
Sunset Amphitheater



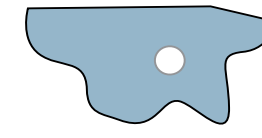
Boreal Forest Garden



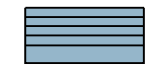
Dogpark
30 x 100m



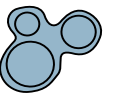
Community Garden



Ice Rink
3000 m2



Stairs to Lake



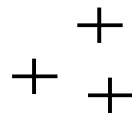
Playground
Outdoor Fitness

Trails and Heritage

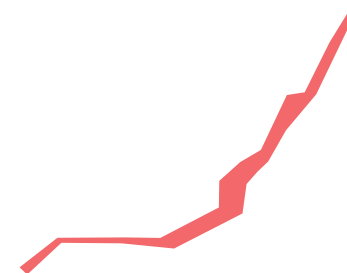
- Waterfront Trail
- Industrial Artifacts
- Forest Trail
- Places of Cultural Heritage (Viewpoint Structure, Fire pit, Beach Pavilion)



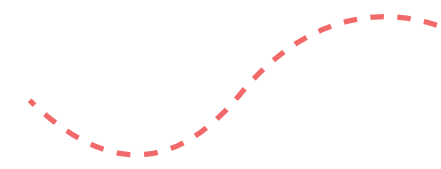
Places of Cultural Heritage



Industrial Artifacts



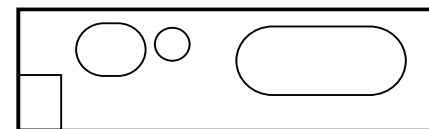
Waterfront Trail



Forest Trail

Marathon ALC

- Pool
- Ice Rink
- Theatre
- Parking



Active Living Center
150 x 45m



ALC Extension
45 x 45m



Parking, 300 spaces

Experience the Indigenous Heritage



Indigenous constructions
Source: Parks Canada - Pukaskwa National Park

Explore the Indigenous history of the site, working together with Biigtigong First Nation in a partnership of trust and respect, striving to establish and maintain a harmonious working relationship. Place an emphasis on traditional materiality, practices and land-based education.



Learning and practices
Source: Parks Canada - Pukaskwa National Park



Pukaskwa pit

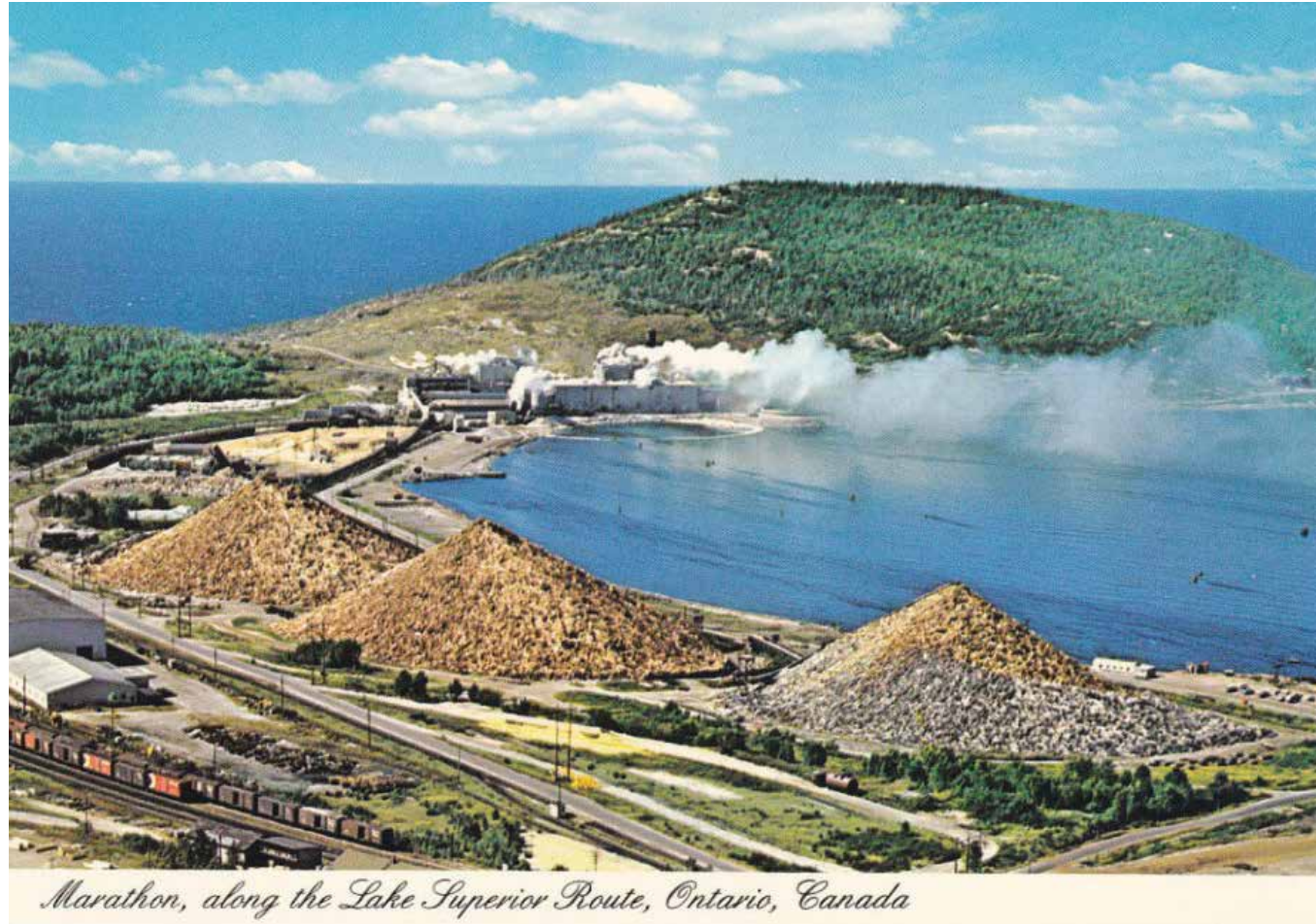


Rose Hips, cultivated for a number of culinary and medicinal uses



Indigenous constructions, Thunderbay, Spirit Garden

Articulate Industrial Footprint



Use the industrial history of the site as a guiding framework for the programmatic organization of the space. Re-introduce Industrial features, materials and landforms.



Log Pile, Marathon ON. 1951



Hemlo Gold Mine



Aerial Footprint of Pulp Mill Operation, 1974



Boom and Jack ladder, 1983/84

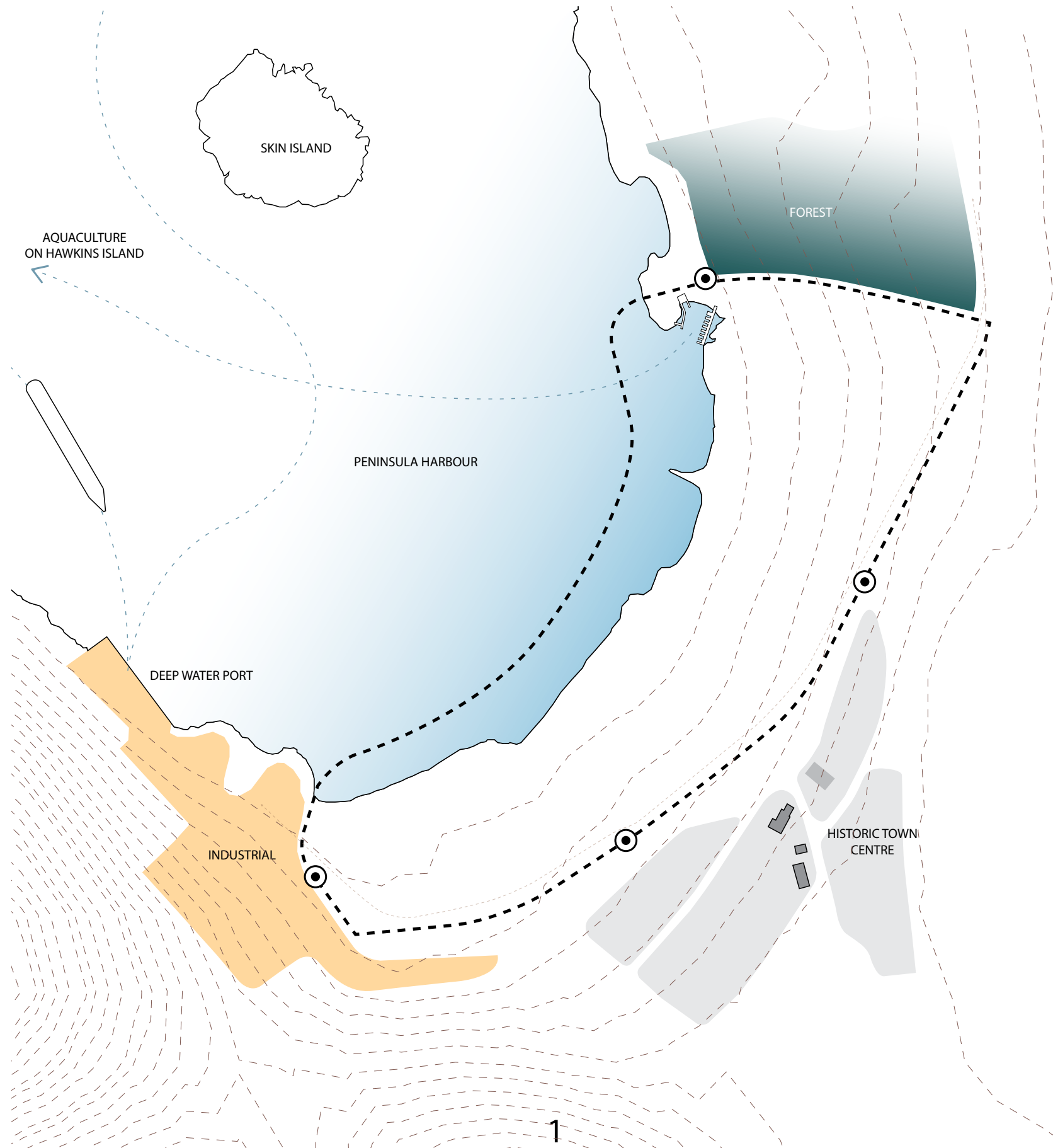


Industrial artifact on site to be relocated



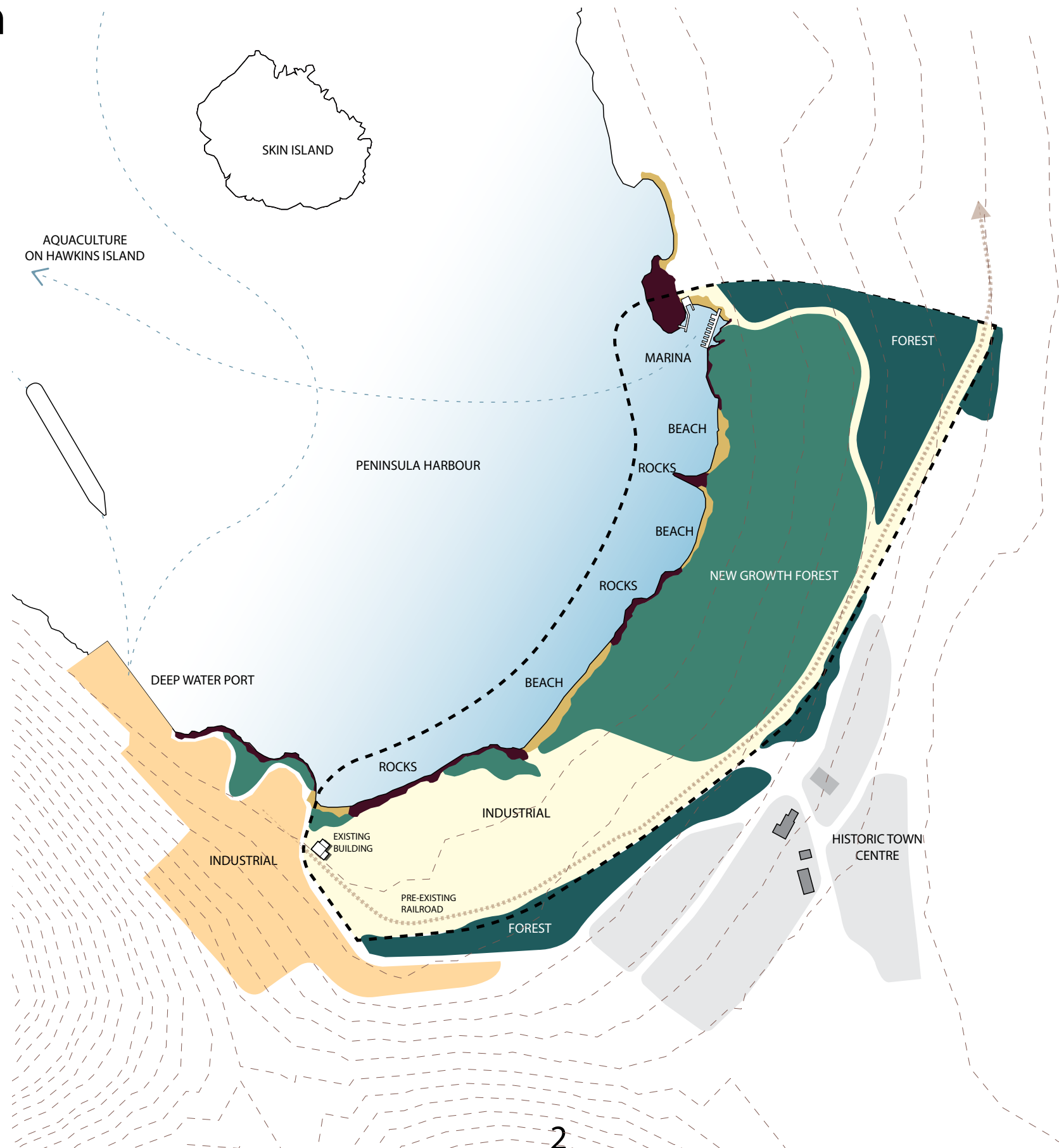
The only industrial building left

Site Exploration



BIG MOVES

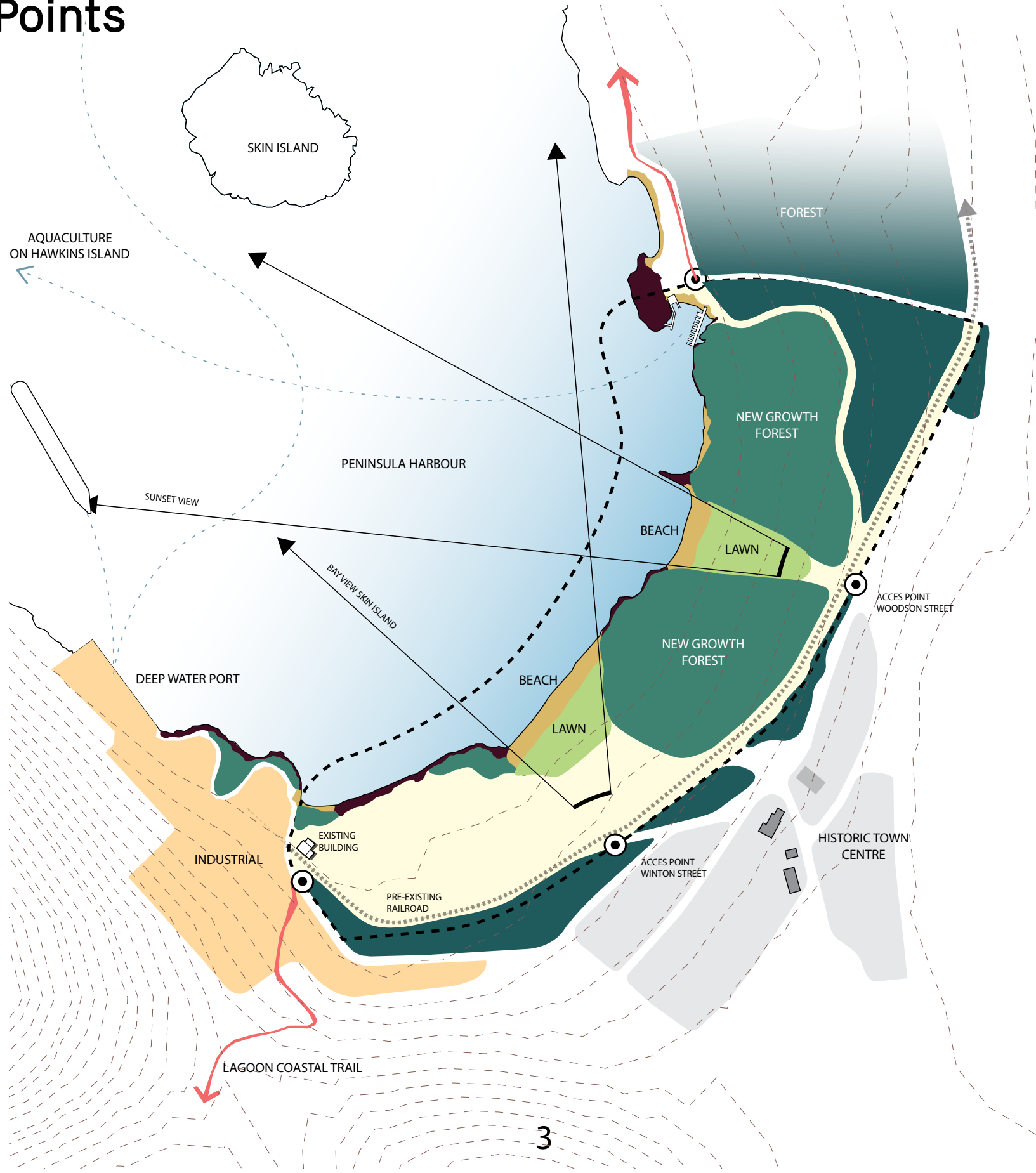
- 1 The site can act as a connector between current and future local economies
- 2 Identifying industrial areas with deep water port, recreation area, residential and commercial area centred around the historic town centre and aquaculture site in the bay.



TAKEAWAYS

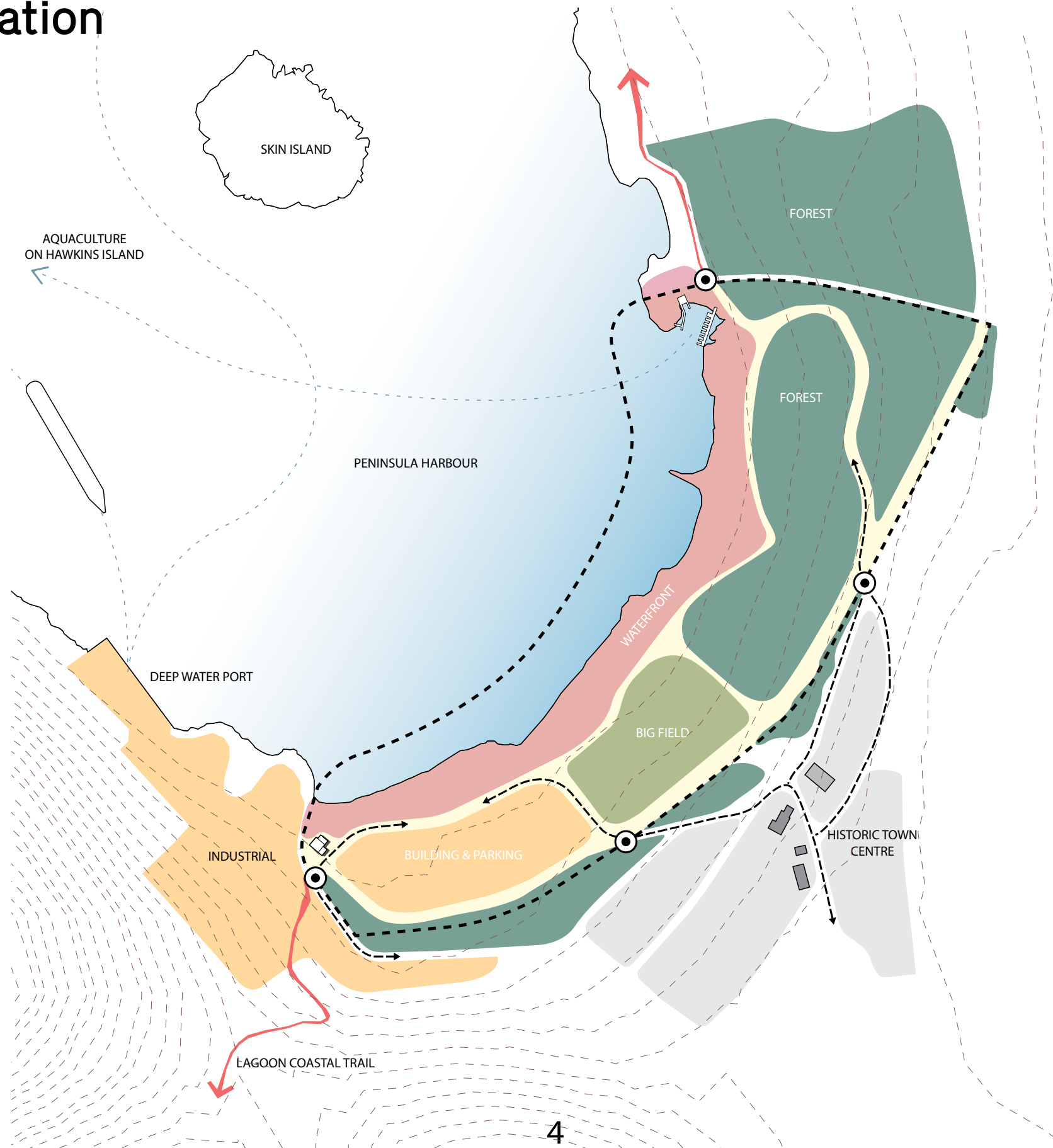
- 1 Site has three distinct conditions:
Forest
Industrial
Waterfront
- 2 Rock, Beach & Forest provide rythm along waterfront. Opportunity to break up the area into different zones
- 3 Industrial area is flat and open. Opportunity for more intensive development.
- 4 Forest area is a young forest. Opportunity to preserve for more passive recreation ie. trails & low impact interventions.

2



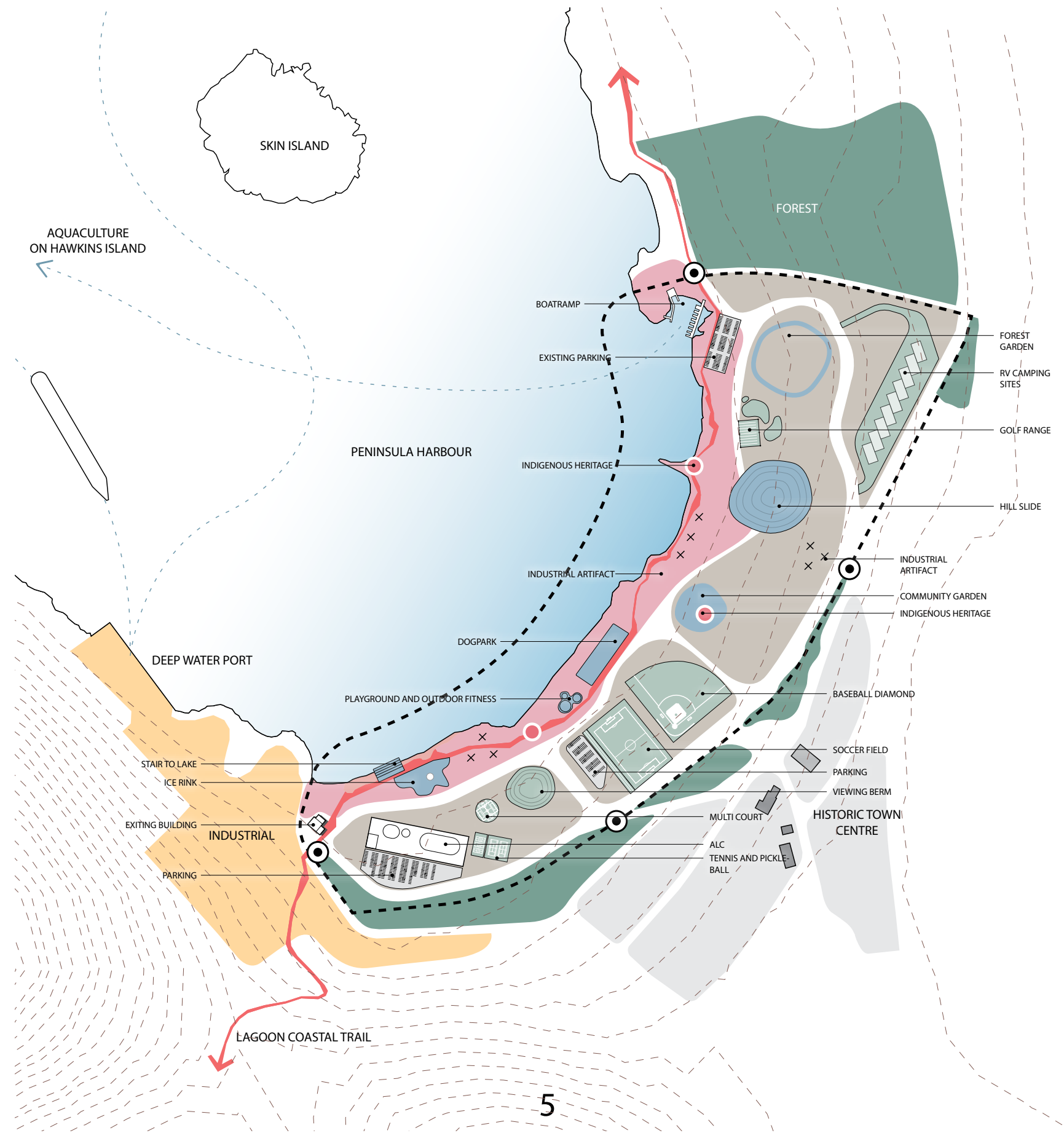
BIG MOVES

- 1 Open up the forest to enhance views and connections.
- 2 Group of Seven / Trans Canada Trail linkage opportunities along the waterfront
- 3 Two distinct vehicular access points. One for each distinct zone (Forest & Industrial)



BIG MOVES

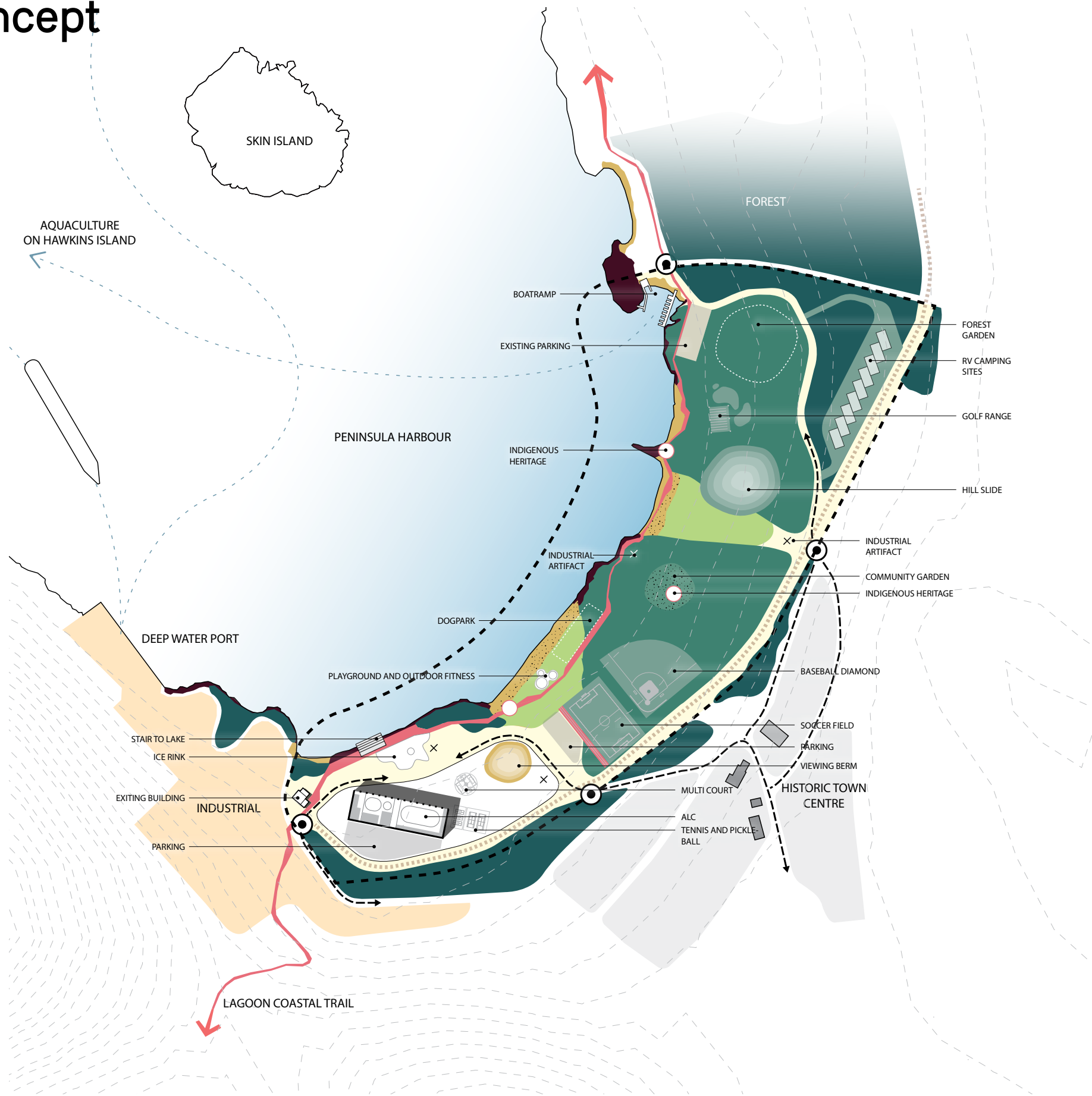
- 1 Break site down further into four programmatic areas
- 2 Add waterfront trail connection linking Group of Seven trail systems to Lagoon Trail
- 3 Provide vehicle access that loops around building/parking area.
- 4 Provide vehicle access through existing forest area for access to marina & camping opportunities.



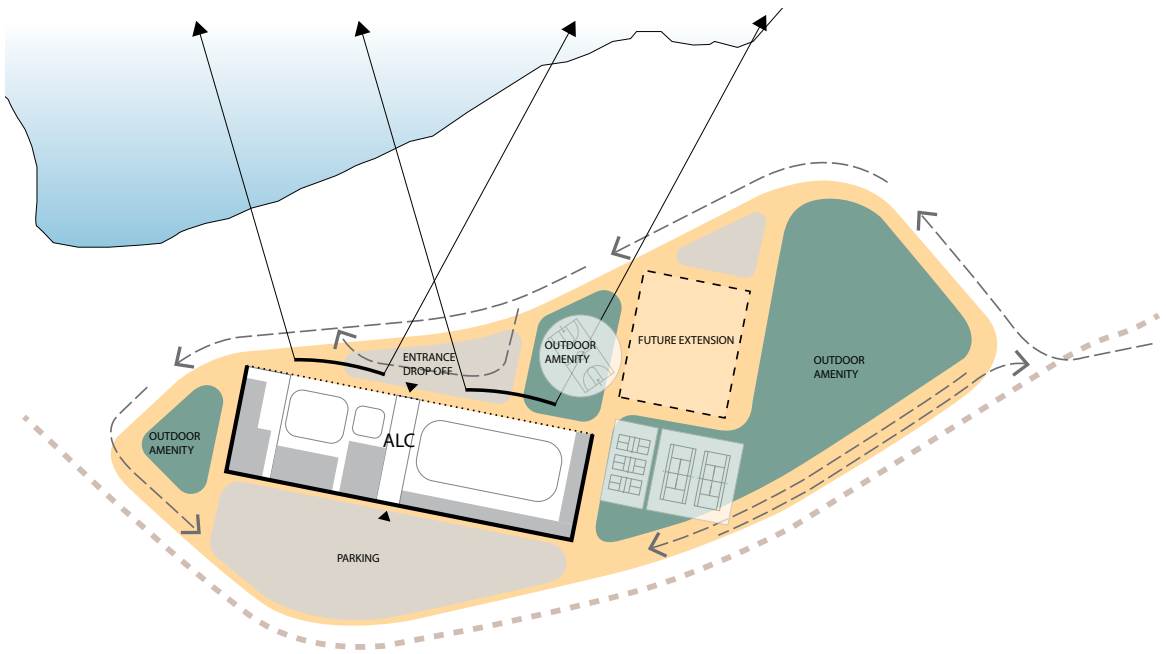
BIG MOVES

- 1 Add program elements to zones to confirm spatial requirements
- 2 Activate the waterfront with passive recreation opportunities
- 3 Place more active programming away from water's edge

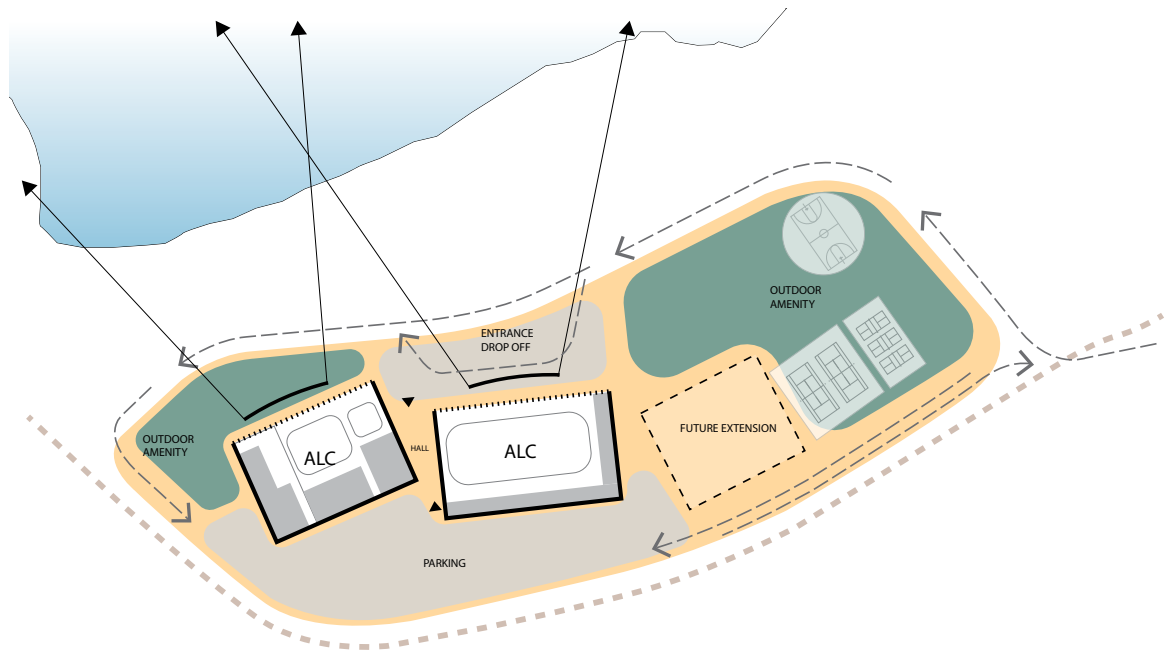
Diagrammatic Concept



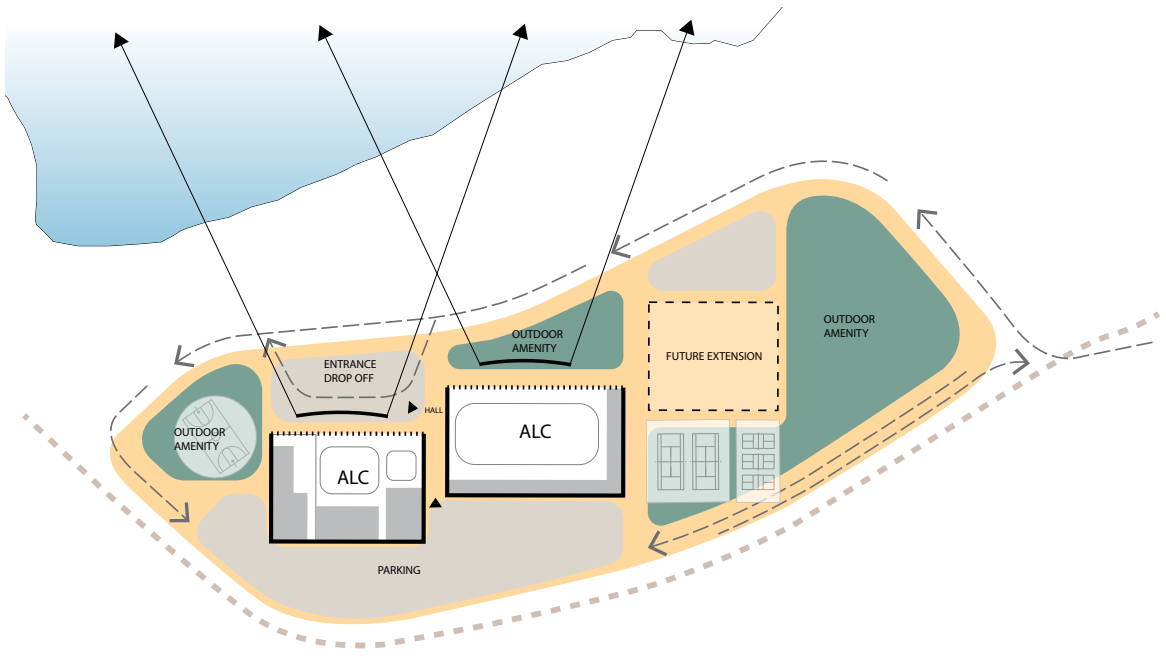
Building Layout Opportunities



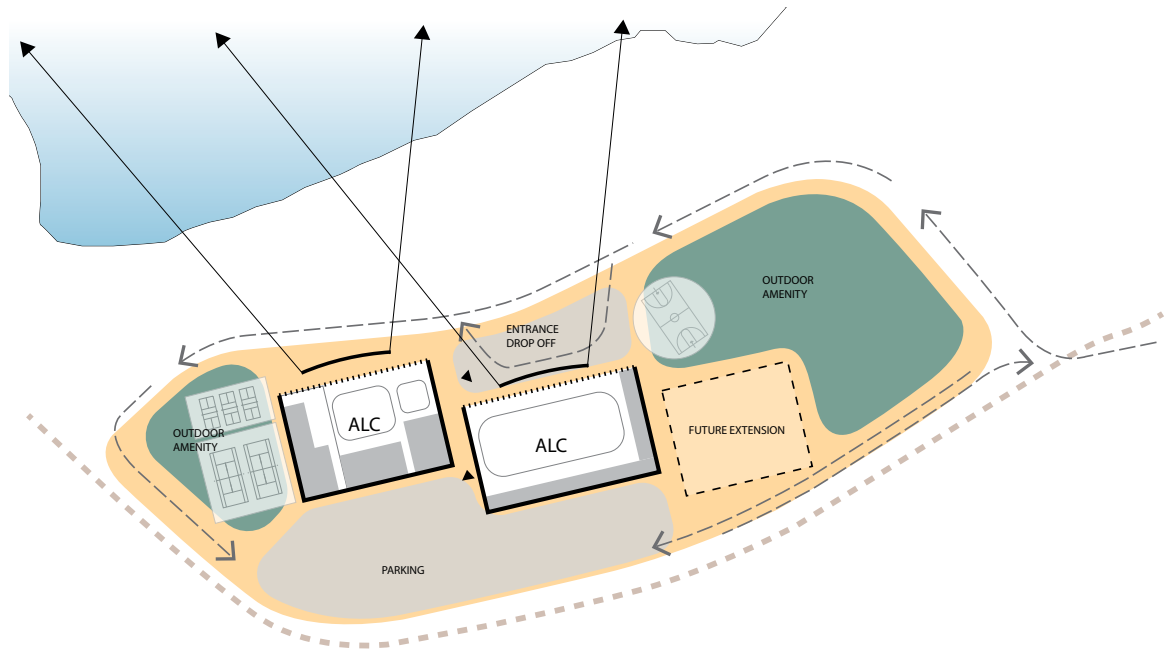
Option 1



Option 2



Option 3



Option 4

